



Histology Catalog

Volume 1

80+ IHC Antibodies

Hottest markers: BRAF V600E, p16^{INK4A}, Her2/Neu, IDH1 R132H, Ki-67, PD-L1.

Slides, Blocks, and Microarrays for normal and diseased tissues.

Tissue Staining, Processing, Embedding, Sectioning, and more.

60+ countries offering abm products.

2,000+ publication citations using abm products.

Collaborations with 100+ renowned institutions and companies worldwide.



Applied Biological Materials, Inc.



*The **abm** Team at the company headquarters in Canada*

Dear Fellow Scientists and Innovators,

Since its founding in 2004, Applied Biological Materials Inc. (**abm**) has been an indispensable provider of life sciences reagents to the scientific community. Our leading expertise in the field of cell engineering, large capacity in antibody development, rigorous quality control, and skills in histological services, has allowed us to establish a formidable collection of SensiStain™ immunohistochemistry (IHC) antibodies, histology related services and products that are available for all of your research needs. This is why we are excited to share our comprehensive and ever growing histology catalog with you!

We are driven by our commitment to provide scientists with affordable, quality, and cutting-edge resources, and we look forward to being a valuable partner in your research.

We are proud of our antibody development capabilities, and look forward to providing reliable reagents for the scientific community.

Sincerely,

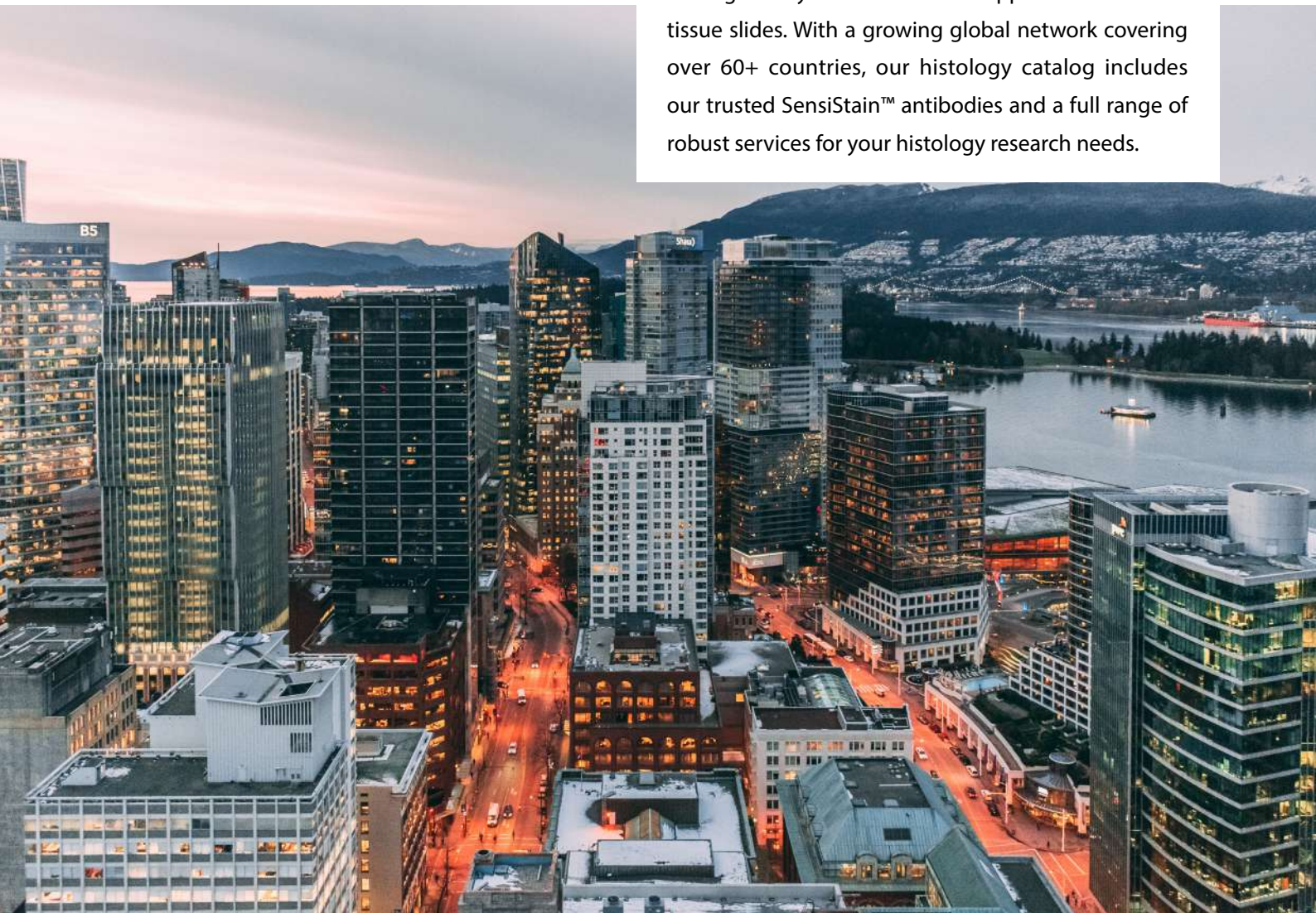
Your **abm** Team



COMPANY OVERVIEW

Applied Biological Materials

Located in the vibrant hub of Vancouver, Canada, **abm** has over a decade of experience in cell line engineering, antibody development, and collaborating with life science labs worldwide. Our robust pipeline allows for reliable development of antibody products, such as our SensiStain™ antibodies, which are developed and rigorously validated for IHC applications on FFPE tissue slides. With a growing global network covering over 60+ countries, our histology catalog includes our trusted SensiStain™ antibodies and a full range of robust services for your histology research needs.



Order & Technical Support..... 7

1

SENSISTAIN™ IHC ANTIBODIES..... 8

AKR1B10	9
Annexin A1	9
Arginase-1	10
Beta-Catenin	10
BG8, Lewis ^Y	11
BRAF V600E.....	11
BSEP	12
CD15/Leu-M1	12
CD2	13
CD44.....	13
CD45 (LCA).....	14
CD45R.....	14
CD56.....	15
CD57.....	15
CDX-2	16
CEA	16
CMTM6	17
Collagen Type IV	17
COX-2	18
Cytokeratin 18	18
Cytokeratin 19	19
Desmoglein 3.....	19
DOG1	20
E-cadherin.....	20
Ep-CAM/Epithelial Specific Antigen	21
Fibronectin.....	21
GATA3	22
GLUT1	22
Glycophorin A.....	23
Hairy Cell Leukemia	23
hENT1	24
Her2/Neu.....	24
HMB-45	25
IDH1 R132H	25
Kappa.....	26

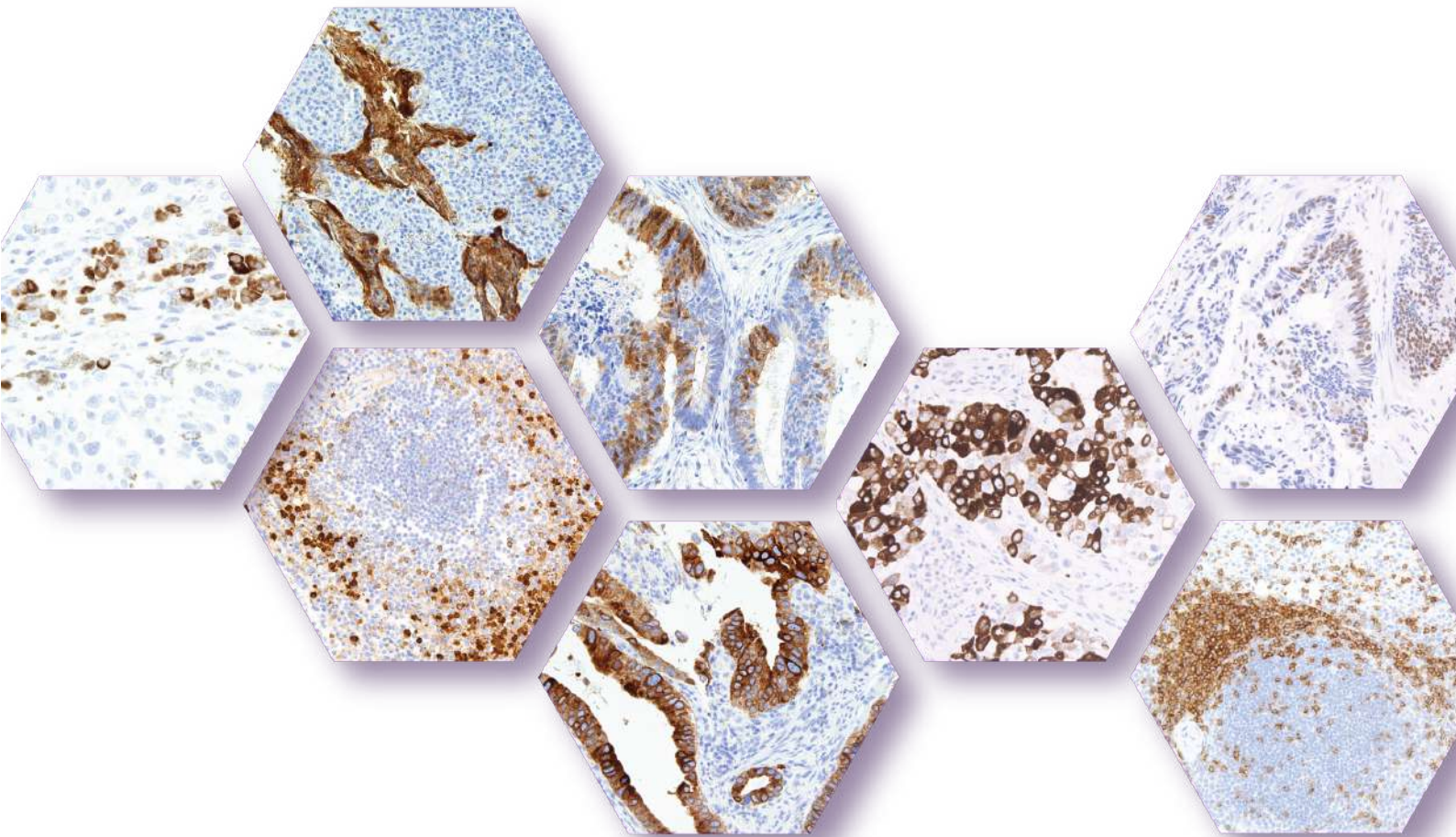
KBA.62 (Melanoma Associated Antigen)	26
Ki-67	27
LAG3.....	27
LMO2.....	28
MDR3	28
MLH1.....	29
MSH2.....	29
MSH6.....	30
MUC5AC.....	30
MUC6	31
Myogenin	31
Nanog	32
Napsin A.....	32
N-cadherin	33
OX40.....	33
p16 ^{INK4A} - Concentrate 100 µl.....	34
p16 ^{INK4A} - Concentrate 1.0 ml	34
p16 ^{INK4A} - Predilute	35
p40.....	35
p504s	36
p53.....	36
p63.....	37
PAX-5.....	37
PAX8	38
PD-1.....	38
PD-L1	39
PMS2	39
Podoplanin	40
Progesterone Receptor	40
PSAP	41
ROS1	41
S-100	42
SALL4.....	42
SOX-2	43
SOX-10.....	43
SOX-11.....	44

Contents *continued*

SPNS2.....	44
Stathmin	45
TAG-72.....	45
Tau	46
TFE3.....	46
Thymidylate Synthase	47
Thyroglobulin	47
TIM3.....	48
TTF-1	48

2	FFPE TISSUE SLIDES.....	49
----------	--------------------------------	-----------

3	HISTOLOGY SERVICES	52
	IHC Services.....	54
	H&E Staining Services.....	55
	Custom Tissue Microarray	56
	Add-On Services	58



Order & Technical Support

Operating Hours

8:00 AM to 5:00 PM PT, Monday to Friday

How to Order

You can place an order online, via email, or by phone:

- Website: www.abmGood.com
- Email: order@abmGood.com
- Toll-free: 1-866-757-2414 - Option 1

General Inquiries

For any general inquiries, feel free to reach out to our customer service team at:

- Email: info@abmGood.com
- Toll-free: 1-866-757-2414

Technical Support

Our team of dedicated scientists will be happy to assist with any technical inquiries you may have:

- Email: technical@abmGood.com
- Toll-free: 1-866-757-2414 - Option 2

Product Use: All products offered by Applied Biological Materials, Inc. (**abm**) are for research use only; not for human, therapeutic, or diagnostic use. **abm** products may not be resold, modified for resale, or used to manufacture commercial products without prior written consent from **abm**.

International Distributors

Our large network of international distributors services the following regions:



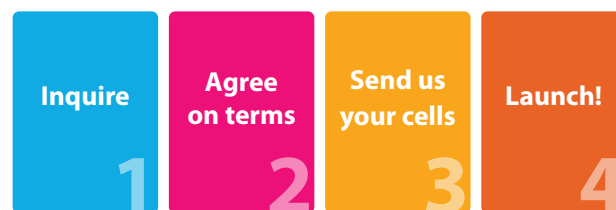
Africa • Argentina • Australia • Austria • Bangladesh • Belgium
Brazil • Bulgaria • Canada • Chile • China • Colombia • Cyprus
Czech Republic • Denmark • Ecuador • Egypt • Estonia
France • Germany • Greece • Hong Kong • India • Iran • Iraq
Israel • Italy • Japan • Latvia • Luxembourg • Macau • Malaysia
Mexico • Netherlands • New Zealand • Nigeria • Norway
Oman • Pakistan • Peru • Philippines • Poland • Portugal
Puerto Rico • Russia • Saudi Arabia • Serbia • Singapore
Slovakia • Slovenia • South Korea • Spain • Sri Lanka • Sweden
Switzerland • Taiwan • Thailand • Tunisia • Turkey • UAE
United Kingdom • USA • Vietnam

Technology Transfer Office

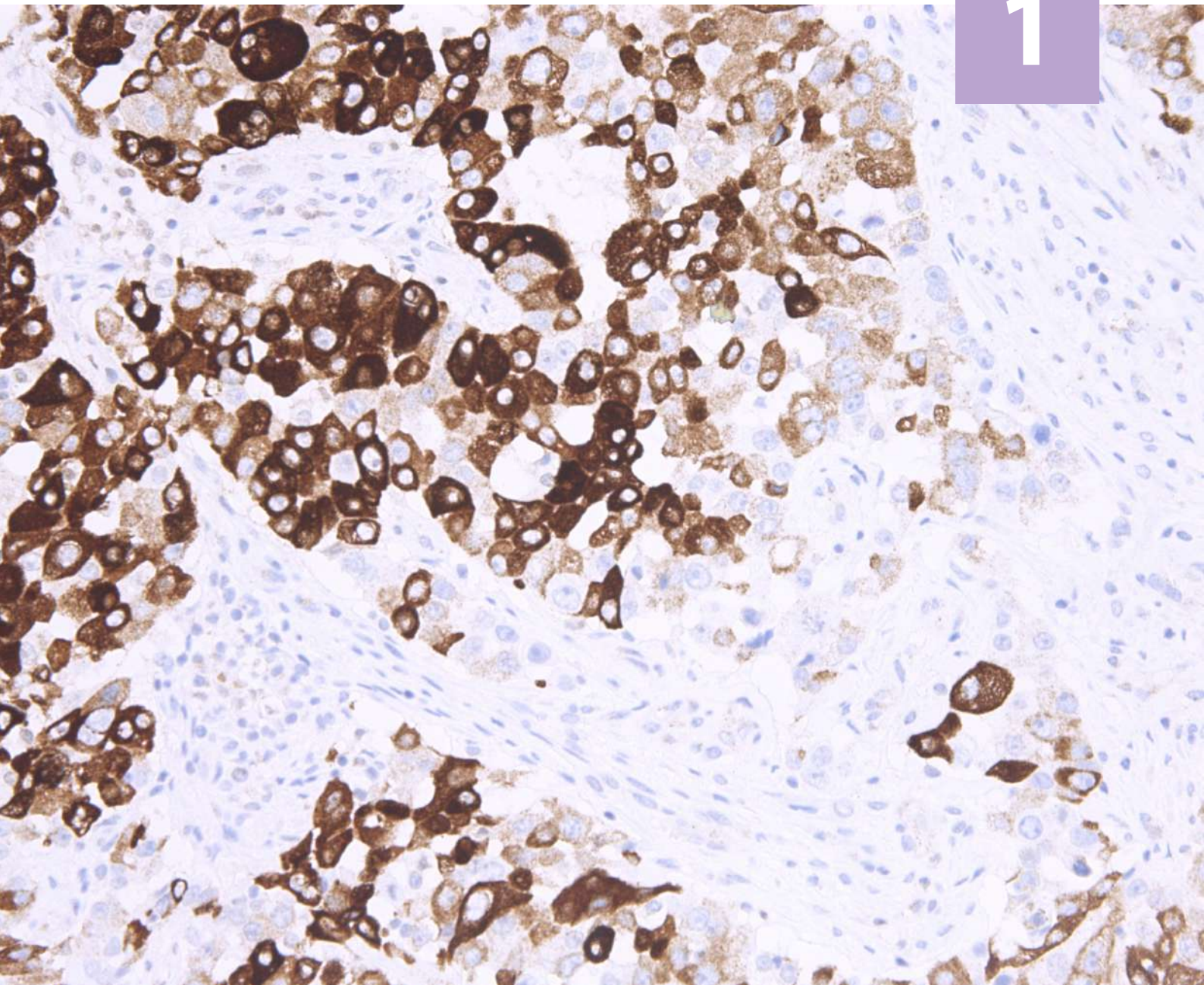
Have old hybridomas taking up valuable space in your freezer? Earn back your research investment!

Recoup those spent research dollars you invested into generating that old cell line by licensing with **abm**. We have a long track record of successful commercialization of scientific discoveries and connecting valuable technologies developed by scientists like you with our global customer base. Join our network of hundreds of scientific collaborators and translate your newly developed hybridoma into a tool to share with the scientific community.

The process is simple:



Contact licensing@abmGood.com to inquire about cell line commercialization opportunities.



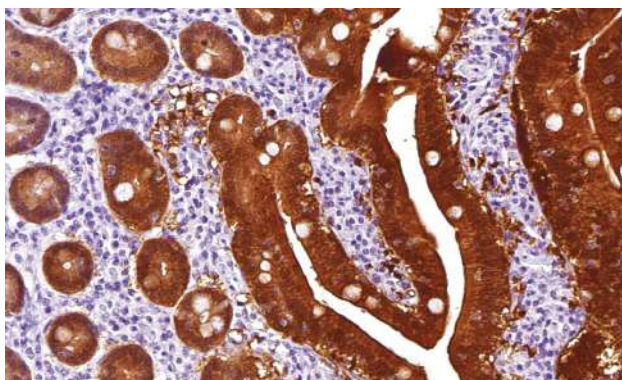
SensiStain™ IHC Antibodies

Validated, highly specific, and designed for your pathology research needs - **abm's** SensiStain™ IHC Antibodies are ready to be incorporated into your lab today. Our expanding repertoire offers a catalog of antibodies, which can be utilized in manual or automated staining systems.

AKR1B10

Clone: AHC0007 | **Cat. No.** HY000007 | **Source:** Mouse Monoclonal

AKR1B10 or Aldo-Keto Reductase family 1 member B10, is an enzyme that catalyzes the reduction of aliphatic and aromatic aldehydes. SensiStain™ Anti-AKR1B10 Antibody is designed to detect AKR1B10, which studies have implicated to be a possible biomarker for liver carcinogenesis.

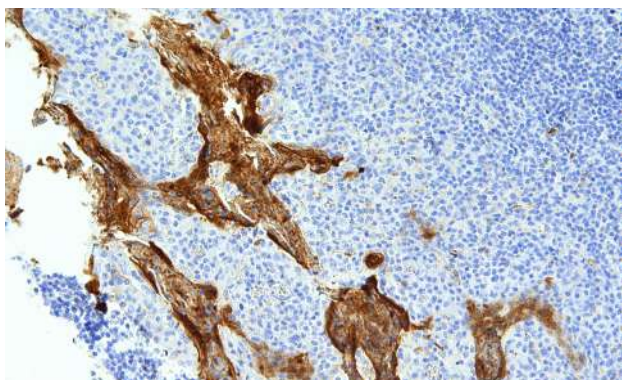


AKR1B10 SensiStain™ on Human Duodenum Tissue

Annexin A1

Clone: AHC0011 | **Cat. No.** HY000011 | **Source:** Mouse Monoclonal

Annexin A1 (ANXA1) is a membrane-bound protein that binds phospholipids and has a role in the innate and adaptive immune systems of humans by regulating the biosynthesis of prostaglandins and leukotriene mediators. Overexpression of ANXA1 is commonly associated with advanced and metastatic diseases. SensiStain™ Anti-Annexin A1 Antibody is validated for the detection of Annexin A1, and is a valuable tool to determine the presence or absence of Annexin A1 in tissue samples.



Annexin A1 SensiStain™ on Human Tonsil Tissue

Specifications

Immunogen	Recombinant Human AKR1B10
Isotype	IgG2a
Quantity	0.5 ml
Uniprot Number	O60218
Purity	Cell Culture Neat Supernatant

Application Information

Application	Immunohistochemistry, Western Blot
Formulation	Liquid
Species Reactivity	Human
Storage Buffer	Neat Supernatant with 0.02% Sodium Azide

Specifications

Immunogen	Recombinant Human Annexin A1
Isotype	IgG1
Concentration	100 µg / 100 µl
Uniprot Number	P04083
Purity	Protein A/G Affinity Purified

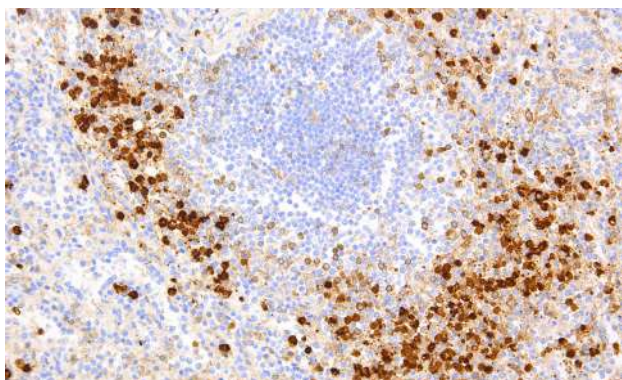
Application Information

Application	Immunohistochemistry, Western Blot
Formulation	Liquid
Species Reactivity	Human
Storage Buffer	PBS, pH 7.4 with 0.02% Sodium Azide

Arginase-1

Clone: AHC0012 | **Cat. No.** HY000012 | **Source:** Mouse Monoclonal

Arginase-1 is a cytosolic metalloenzyme encoded by the ARG1 gene and is expressed primarily in hepatocytes. SensiStain™ Anti-Arginase-1 Antibody is validated for the detection of Arginase-1 (ARG1). ARG1 is often used as a specific marker to distinguish benign and malignant hepatic tumors as it is highly specific for hepatocytes.

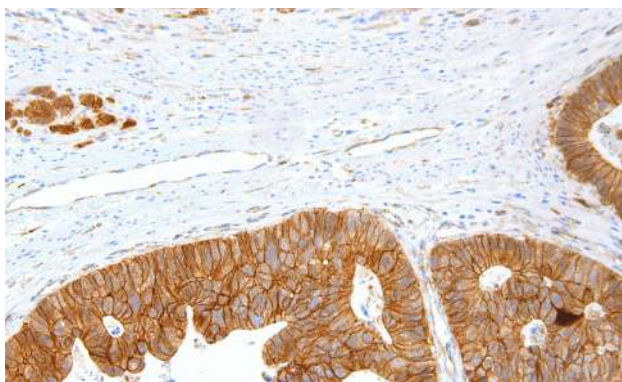


Arginase-1 SensiStain™ on Human Spleen Tissue

Beta-Catenin

Clone: AHC0017 | **Cat. No.** HY000017 | **Source:** Mouse Monoclonal

Beta-Catenin is a cytoplasmic protein with roles in cell-cell adhesion and gene expression. It is normally present in the submembranous regions of the cell. Nuclear accumulation of beta-catenin has been found to occur as a result of gene mutations. SensiStain™ Anti-Beta-Catenin Antibody is ready for use for your research applications.



Beta-Catenin SensiStain™ on Human Colon Tissue

Specifications

Immunogen	Recombinant Human Arginase-1
Isotype	IgG2b
Concentration	100 µg / 100 µl
Uniprot Number	P05089
Purity	Protein A/G Affinity Purified

Application Information

Application	Immunohistochemistry, Western Blot, ELISA
Formulation	Liquid
Species Reactivity	Human
Storage Buffer	PBS, pH 7.4 with 0.02% Sodium Azide

Specifications

Immunogen	Recombinant Human Beta-Catenin
Isotype	IgG1, kappa
Concentration	100 µg / 100 µl
Uniprot Number	P35222
Purity	Protein A/G Affinity Purified

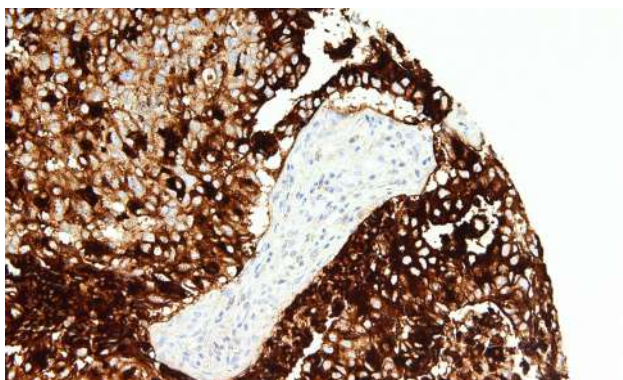
Application Information

Application	Immunohistochemistry
Formulation	Liquid
Species Reactivity	Human
Storage Buffer	PBS, pH 7.4 with 0.02% Sodium Azide

BG8, Lewis^Y

Clone: AHC0018 | **Cat. No.** HY000018 | **Source:** Mouse Monoclonal

Lewis^Y blood antigen or simply BG8, is a blood group antigen that has been identified in studies as a potential marker for differentiating pulmonary adenocarcinoma (PACA) from epithelioid mesothelioma (EM). SensiStain™ Anti-BG8, Lewis^Y Antibody is designed to detect Lewis^Y antigen and is in ready-to-use format for your research needs.



BG8, Lewis^Y SensiStain™ on Human Lung Tissue

Specifications

Immunogen	Human BG8, Lewis ^Y
Isotype	IgG1, kappa
Concentration	100 µg / 100 µl
Uniprot Number	N/A
Purity	Protein A/G Affinity Purified

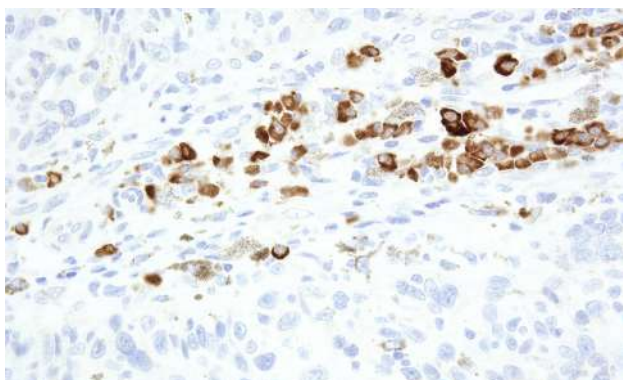
Application Information

Application	Immunohistochemistry
Formulation	Liquid
Species Reactivity	Human
Storage Buffer	PBS, pH 7.4 with 0.02% Sodium Azide

BRAF V600E

Clone: AHC0019 | **Cat. No.** HY000019 | **Source:** Mouse Monoclonal

SensiStain™ Anti-BRAF V600E Antibody detects the V600E mutant form of BRAF (serine/threonine-protein kinase B-Raf). Studies have shown that mutations on the BRAF gene, in which 80% are of the single V600E substitution, resulted in an increase of cell proliferation and resistance to apoptosis. BRAF V600E is therefore an important immunohistochemical marker for tumor studies.



BRAF V600E SensiStain™ on Human Thyroid Tissue

Specifications

Immunogen	Synthetic BRAF V600E Peptide
Isotype	IgM
Quantity	0.5 ml
Uniprot Number	P15056
Purity	Cell Culture Neat Supernatant

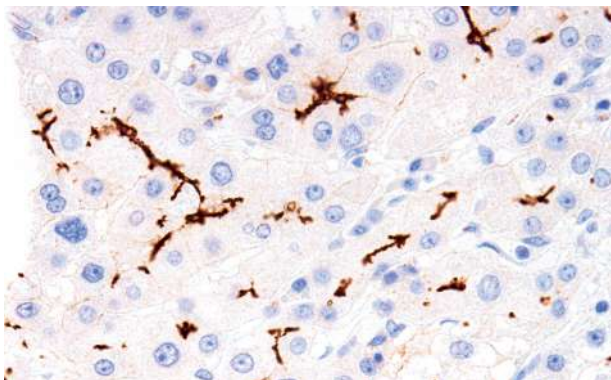
Application Information

Application	Immunohistochemistry, ELISA
Formulation	Liquid
Species Reactivity	Human
Storage Buffer	Neat Supernatant with 0.02% Sodium Azide

BSEP

Clone: AHC0021 | **Cat. No.** HY000021 | **Source:** Mouse Monoclonal

SensiStain™ Anti-BSEP Antibody is validated for the detection of bile salt export pump (BSEP) which has a role in the transport of bile acid, taurocholate, and other cholate conjugates across the hepatocyte canalicular membrane. BSEP has been associated with disorders, such as progressive familial intrahepatic cholestasis type 2 (PFIC2) and benign recurrent intrahepatic cholestasis type 2 (BRIC2). Bile Salt Export Pump (BSEP) is a membrane associated protein encoded by the ABCB11 gene - a member of the superfamily ATP-binding cassette (ABC) transporters.

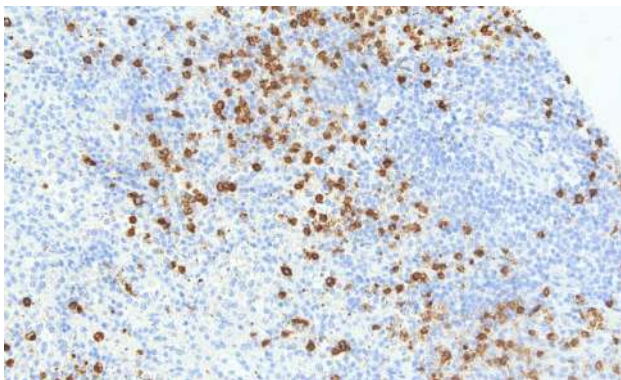


BSEP SensiStain™ on Human Liver Tissue

CD15/Leu-M1

Clone: AHC0040 | **Cat. No.** HY000040 | **Source:** Mouse Monoclonal

SensiStain™ Anti-CD15/Leu-M1 Antibody is validated for the detection of CD15/Leu-M1. CD15 or Leu-M1 has a role in bactericidal activity, chemotaxis, and mediating phagocytosis. Negative staining may be useful for identifying Hodgkin's lymphoma tissue samples.



CD15/Leu-M1 SensiStain™ on Human Spleen Tissue

Specifications

Immunogen	Recombinant Human BSEP
Isotype	IgG1
Concentration	100 µg / 100 µl
Uniprot Number	O95342
Purity	Protein A/G Affinity Purified

Application Information

Application	Immunohistochemistry, ELISA
Formulation	Liquid
Species Reactivity	Human
Storage Buffer	PBS, pH 7.4 with 0.02% Sodium Azide

Specifications

Immunogen	Recombinant Human CD15/Leu-M1
Isotype	IgM
Quantity	0.5 ml
Uniprot Number	P22083
Purity	Cell Culture Neat Supernatant

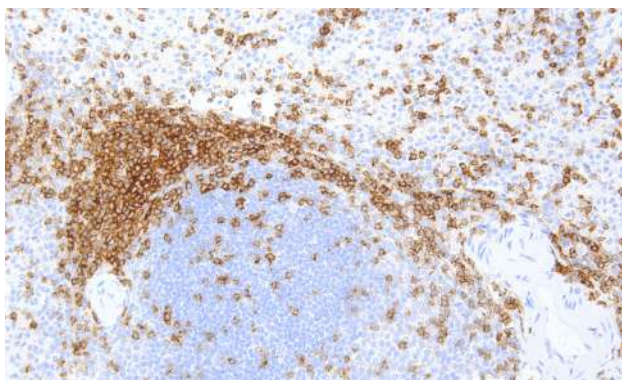
Application Information

Application	Immunohistochemistry
Formulation	Liquid
Species Reactivity	Human
Storage Buffer	Neat Supernatant with 0.02% Sodium Azide

CD2

Clone: AHC0031 | **Cat. No.** HY000031 | **Source:** Mouse Monoclonal

SensiStain™ Anti-CD2 Antibody is designed for detection of CD2 protein expressing tissue or lysates. CD2 is a 50 kDa transmembrane glycoprotein and is associated with T-cell activation. Abnormal expressions of CD2 had been found in mature T-cell malignancies, but the clinical significance is unknown. SensiStain™ Anti-CD2 Antibody may be utilized to study T-cell related malignancies for further research.



CD2 SensiStain™ on Human Spleen Tissue

Specifications

Immunogen	Human Cytolytic T Lymphocytes
Isotype	IgG1
Concentration	100 µg / 100 µl
Uniprot Number	P06729
Purity	Protein A/G Affinity Purified

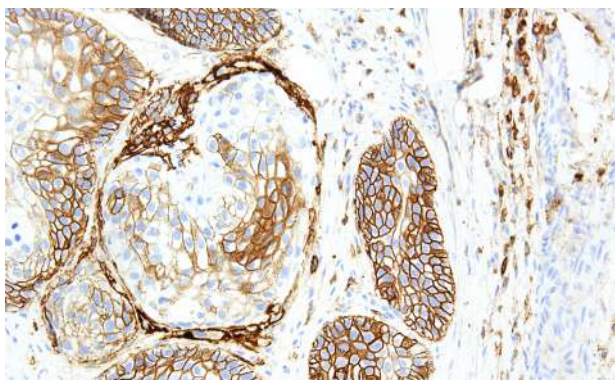
Application Information

Application	Immunohistochemistry, Western Blot
Formulation	Liquid
Species Reactivity	Human
Storage Buffer	PBS, pH 7.4 with 0.02% Sodium Azide

CD44

Clone: AHC0056 | **Cat. No.** HY000056 | **Source:** Mouse Monoclonal

SensiStain™ Anti-CD44 Antibody is developed to detect CD44, a glycoprotein receptor for hyaluronic acid; which plays a fundamental role in cellular adhesion, stromal binding, migration, and cell-cell interactions. CD44 have been detected in a wide range of cancers, thus the most practical use of the marker is to help distinguish between urothelial transitional cell carcinoma *in situ* from non-neoplastic changes in the urothelium.



CD44 SensiStain™ on Human Throat Tissue

Specifications

Immunogen	Recombinant Human CD44
Isotype	IgG2a
Quantity	0.5 ml
Uniprot Number	P16070
Purity	Cell Culture Neat Supernatant

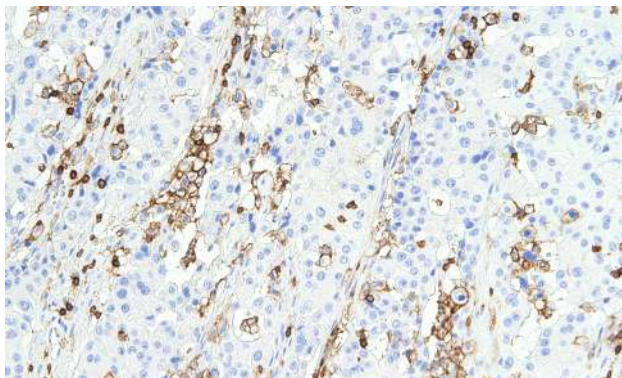
Application Information

Application	Immunohistochemistry
Formulation	Liquid
Species Reactivity	Human
Storage Buffer	Neat Supernatant with 0.02% Sodium Azide

CD45 (LCA)

Clone: AHC0057 | **Cat. No.** HY000057 | **Source:** Mouse Monoclonal

SensiStain™ Anti-CD45 (LCA) Antibody is designed to detect the CD45 LCA (leukocyte common antigen). CD45 is expressed in most nucleated cells from hematopoietic origin, and is essential to regulate T and B cell antigen receptor signalling. Cluster of differentiation 45 (CD45), otherwise known as leukocyte common antigen (LCA), is a member of the protein tyrosine phosphatase (PTP) family.

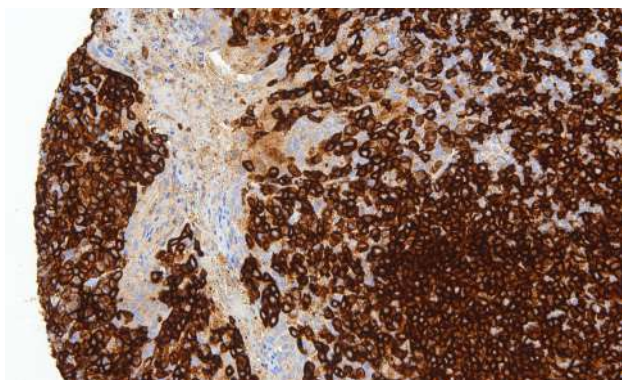


CD45 (LCA) SensiStain™ on Human Pancreas Tissue

CD45R

Clone: AHC0058 | **Cat. No.** HY000058 | **Source:** Mouse Monoclonal

SensiStain™ Anti-CD45R Antibody can be utilized to distinguish between B cell lymphomas and T cell lymphomas, with specific reactivity to follicle center cells, mantle cells, some medullary thymocytes, and 80% of B cell lymphomas. CD45R or MB1 is an isoform of CD45, a member of the protein tyrosine phosphatase (PTPase) family and is expressed specifically on the surface of hematopoietic cells.



CD45R SensiStain™ on Human Tonsil Tissue

Specifications

Immunogen	Recombinant Human CD45 (LCA)
Isotype	IgG2a
Concentration	100 µg / 100 µl
Uniprot Number	P08575
Purity	Protein A/G Affinity Purified

Application Information

Application	Immunohistochemistry
Formulation	Liquid
Species Reactivity	Human
Storage Buffer	PBS, pH 7.4 with 0.02% Sodium Azide

Specifications

Immunogen	Recombinant Human CD45R
Isotype	IgG1, kappa
Concentration	100 µg / 100 µl
Uniprot Number	P08575
Purity	Protein A/G Affinity Purified

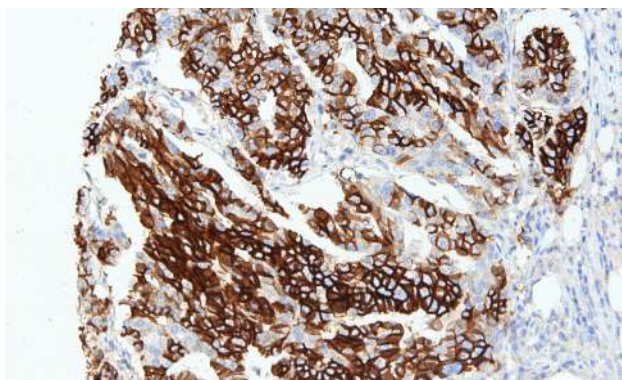
Application Information

Application	Immunohistochemistry
Formulation	Liquid
Species Reactivity	Human
Storage Buffer	PBS, pH 7.4 with 0.02% Sodium Azide

CD56

Clone: AHC0060 | **Cat. No.** HY000060 | **Source:** Mouse Monoclonal

SensiStain™ Anti-CD56 Antibody detect CD56, a glycoprotein involved in synaptic plasticity, cell-cell adhesion, neurite outgrowth, learning, and memory.



CD56 SensiStain™ on Human Ovary Tissue

Specifications

Immunogen	Recombinant Human CD56
Isotype	IgG1, kappa
Concentration	100 µg / 100 µl
Uniprot Number	P13591
Purity	Protein A/G Affinity Purified

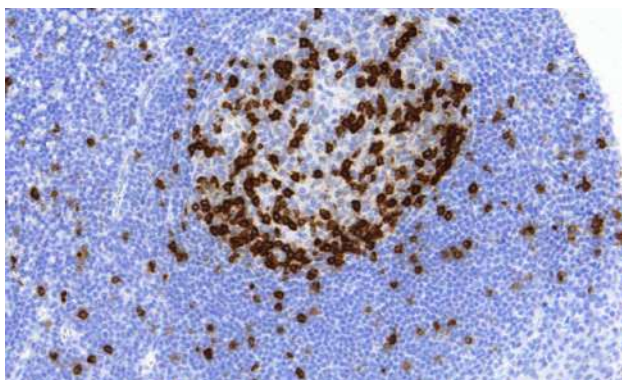
Application Information

Application	Immunohistochemistry
Formulation	Liquid
Species Reactivity	Human
Storage Buffer	PBS, pH 7.4 with 0.02% Sodium Azide

CD57

Clone: AHC0061 | **Cat. No.** HY000061 | **Source:** Mouse Monoclonal

SensiStain™ Anti-CD57 Antibody is a valuable tool for the identification of human CD57. Cluster of differentiation 57 (CD57), also known as NK-1, is a member of the glucuronyltransferase gene family. CD57 is an antigen found in natural killer cells, some T-lymphocytes, peripheral blood mononuclear cells, myeloid cells, and a variety of polypeptides, as well as chondroitin sulfate proteoglycans.



CD57 SensiStain™ on Human Tonsil Tissue

Specifications

Immunogen	Recombinant Human CD57
Isotype	IgM, kappa
Quantity	0.5 ml
Uniprot Number	Q9P2W7
Purity	Cell Culture Neat Supernatant

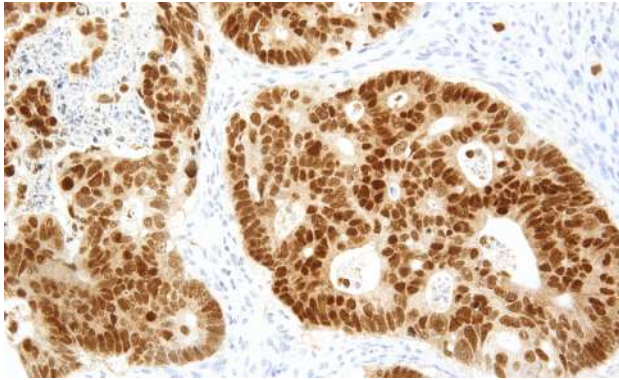
Application Information

Application	Immunohistochemistry, Western Blot
Formulation	Liquid
Species Reactivity	Human
Storage Buffer	Neat Supernatant with 0.02% Sodium Azide

CDX-2

Clone: AHC0074 | **Cat. No.** HY000074 | **Source:** Mouse Monoclonal

SensiStain™ Anti-CDX-2 Antibody is validated for the detection of CDX-2, which is a useful marker for gastrointestinal carcinoma, and for determining the origin of gastrointestinal metastatic adenocarcinoma and carcinoids.



CDX-2 SensiStain™ on Human Colon Tissue

Specifications

Immunogen	Recombinant Human CDX-2
Isotype	IgG1
Concentration	100 µg / 100 µl
Uniprot Number	Q99626
Purity	Protein A/G Affinity Purified

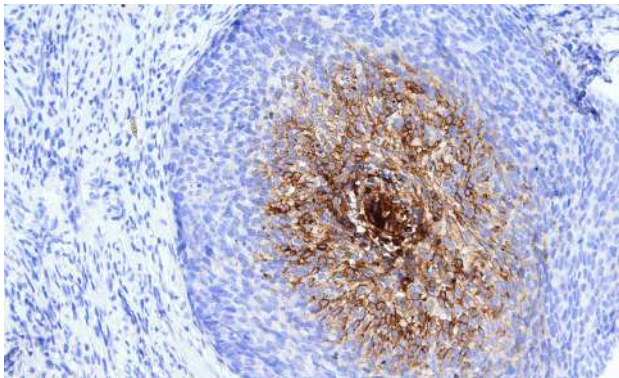
Application Information

Application	Immunohistochemistry
Formulation	Liquid
Species Reactivity	Human
Storage Buffer	PBS, pH 7.4 with 0.02% Sodium Azide

CEA

Clone: AHC0075 | **Cat. No.** HY000075 | **Source:** Mouse Monoclonal

SensiStain™ Anti-CEA Antibody is validated for the detection of CEA (Carcinoembryonic antigen), which can be found in low levels in normal human adult blood. CEA staining can be performed along with markers Calretinin, CK 5/6, D2-40, HBME-1, Napsin A, MOC-31, and Ber-EP4 to help differentiate between adenocarcinoma and mesothelioma.



CEA SensiStain™ on Human Cervix Tissue

Specifications

Immunogen	Human Colonic Adenocarcinoma
Isotype	IgM
Quantity	0.5 ml
Uniprot Number	P06731
Purity	Cell Culture Neat Supernatant

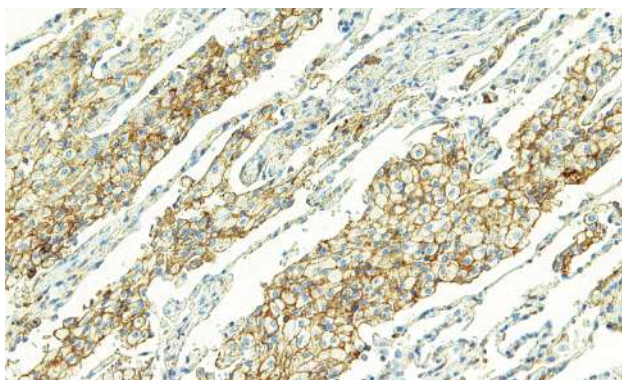
Application Information

Application	Immunohistochemistry
Formulation	Liquid
Species Reactivity	Human
Storage Buffer	Neat Supernatant with 0.02% Sodium Azide

CMTM6

Clone: ACH0275 | **Cat. No.** HY000275 | **Source:** Mouse Monoclonal

CMTM6, also referred to as CKLF Like MARVEL Transmembrane Domain Containing 6, is widely expressed in many tissues, but the function relatively remains unknown. SensiStain™ Anti-CMTM6 Antibody detects the presence of CMTM6, which can be found binding to PD-L1 and maintains its cell surface expression. Due to the high specificity CMTM6 has with PD-L1, it can be studied alongside with PD-L1 as it has a role in suppression of tumour-specific T cell activity.

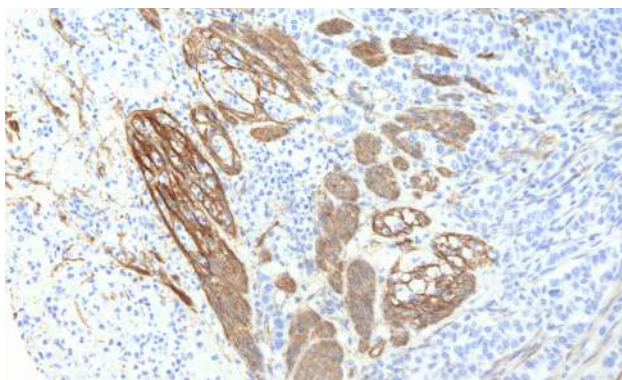


CMTM6 SensiStain™ on Human Lung Tissue

Collagen Type IV

Clone: AHC0081 | **Cat. No.** HY000081 | **Source:** Mouse Monoclonal

SensiStain™ Anti-Collagen Type IV Antibody is designed for detection of collagen IV protein expressing tissue or lysates. Collagen IV is found in the basal lamina and a constituent of the basement membrane, which has a role in supporting structure. Disruptions or complete absent of basement membrane may be indicative of upregulation of matrix metalloproteinases secreted by cancer cells. The loss of structure integrity of the basement membrane is associated with stages of invasive cancers.



Collagen Type IV SensiStain™ on Human Stomach Tissue

Specifications

Immunogen	Recombinant Human CMTM6
Isotype	IgG1
Concentration	100 µg / 100 µl
Uniprot Number	Q9NX76
Purity	Protein A/G Affinity Purified

Application Information

Application	Immunohistochemistry, ELISA
Formulation	Liquid
Species Reactivity	Human
Storage Buffer	PBS, pH 7.4 with 0.02% Sodium Azide

Specifications

Immunogen	Human Placenta
Isotype	IgG1, kappa
Concentration	100 µg / 100 µl
Uniprot Number	P02462
Purity	Protein A/G Affinity Purified

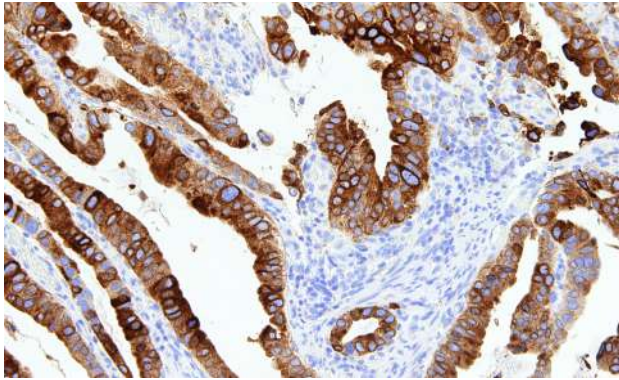
Application Information

Application	Immunohistochemistry, Western Blot
Formulation	Liquid
Species Reactivity	Human
Storage Buffer	PBS, pH 7.4 with 0.02% Sodium Azide

COX-2

Clone: AHC0082 | **Cat. No.** HY000082 | **Source:** Mouse Monoclonal

COX-2 or Cyclooxygenase-2 is an enzyme responsible for the conversion of arachidonic acid to prostaglandin H2. Inhibition of COX has been linked to the relief of inflammation and pain, thus is a target in pharmaceutical research. SensiStain™ Anti-COX-2 Antibody is developed for the detection of the presence of COX-2 for research needs.

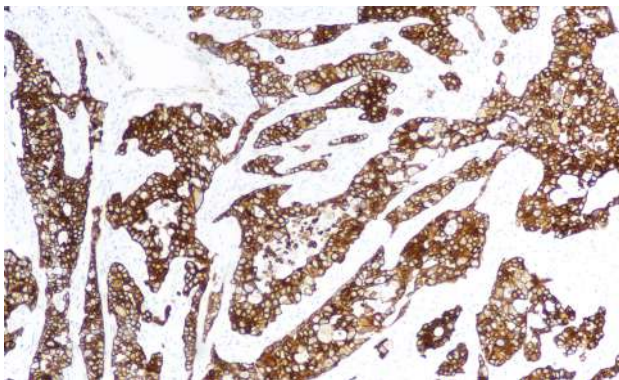


COX-2 SensiStain™ on Human Stomach Tissue

Cytokeratin 18

Clone: AHC0095 | **Cat. No.** HY000095 | **Source:** Mouse Monoclonal

SensiStain™ Anti-Cytokeratin 18 Antibody is designed for the detection of human CK18 in tissues and cell lysates. Cytokeratin 18 (CK18) is expressed in epithelial tissue and is commonly found together with Cytokeratin 8 (CK8). It is a useful marker for adenocarcinomas of simple and glandular epithelium origin, or poorly differentiated squamous carcinoma cells. It may be used with Cytokeratin 8 (CK8) and Cytokeratin 19 (CK19) to differentiate epithelial originated cells.



Cytokeratin 18 SensiStain™ on Human Pancreas Tissue

Specifications

Immunogen	Recombinant Human COX-2
Isotype	IgG2b
Concentration	100 µg / 100 µl
Uniprot Number	P35354
Purity	Protein A/G Affinity Purified

Application Information

Application	Immunohistochemistry, ELISA
Formulation	Liquid
Species Reactivity	Human
Storage Buffer	PBS, pH 7.4 with 0.02% Sodium Azide

Specifications

Immunogen	Recombinant Human Cytokeratin 18
Isotype	IgG2b, kappa
Concentration	100 µg / 100 µl
Uniprot Number	P05783
Purity	Protein A/G Affinity Purified

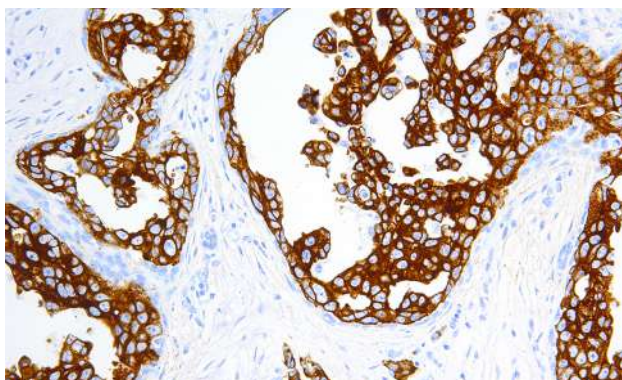
Application Information

Application	Immunohistochemistry
Formulation	Liquid
Species Reactivity	Human
Storage Buffer	PBS, pH 7.4 with 0.02% Sodium Azide

Cytokeratin 19

Clone: AHC0096 | **Cat. No.** HY000096 | **Source:** Mouse Monoclonal

SensiStain™ Anti-Cytokeratin 19 Antibody is an intermediate filament protein making up the structural integrity of epithelial cells specifically found in the periderm. Cytokeratin 19 (CK19) has been used in studies for detection of tumor cells in bone marrow, lymph nodes, and even in peripheral blood. The SensiStain™ Anti-Cytokeratin 19 Antibody is designed for the detection of human CK19 in tissues and in cell lysates.

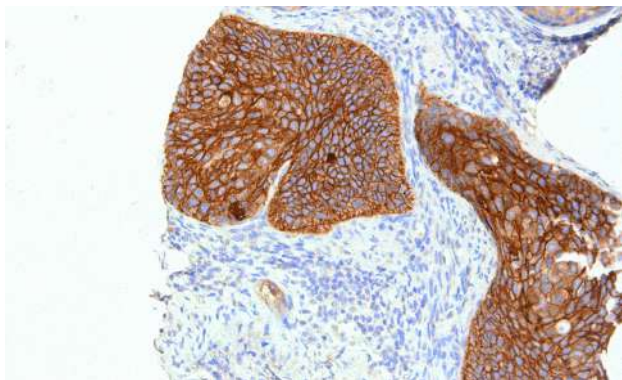


Cytokeratin 19 SensiStain™ on Human Breast Tissue

Desmoglein 3

Clone: ACH0273 | **Cat. No.** HY000273 | **Source:** Mouse Monoclonal

SensiStain™ Anti-Desmoglein-3 Antibody is developed to detect for the presence of desmoglein-3. Encoded by the human gene DSG3, Desmoglein-3 is expressed in the basal layers of the epidermis. Studies have shown that the presence or absence of desmoglein-3 may be used as a prognostic marker of esophageal squamous cell carcinoma (ESCC).



Desmoglein 3 SensiStain™ on Human Cervix Tissue

Specifications

Immunogen	Recombinant Human Cytokeratin 19
Isotype	IgG1
Concentration	100 µg / 100 µl
Uniprot Number	P08727
Purity	Protein A/G Affinity Purified

Application Information

Application	Immunohistochemistry
Formulation	Liquid
Species Reactivity	Human
Storage Buffer	PBS, pH 7.4 with 0.02% Sodium Azide

Specifications

Immunogen	Recombinant Human Desmoglein-3
Isotype	IgG1
Concentration	100 µg / 100 µl
Uniprot Number	P32926
Purity	Protein A/G Affinity Purified

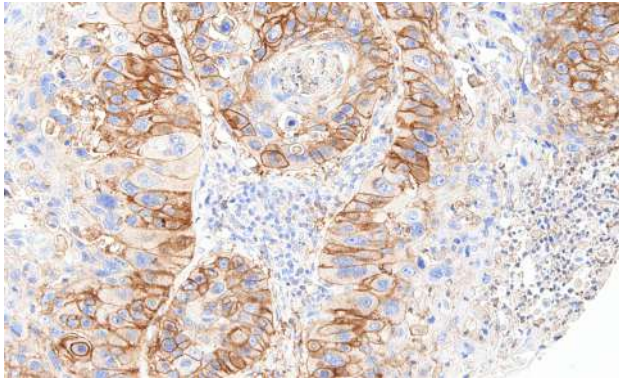
Application Information

Application	Immunohistochemistry
Formulation	Liquid
Species Reactivity	Human
Storage Buffer	PBS, pH 7.4 with 0.02% Sodium Azide

DOG1

Clone: AHC0101 | **Cat. No.** HY000101 | **Source:** Mouse Monoclonal

SensiStain™ Anti-DOG1 Antibody is designed to detect DOG1 in human tissues. DOG1 is expressed in the vast majority of gastrointestinal stromal tumor (GIST) cases, thus is considered to be a specific biomarker for GIST.



DOG1 SensiStain™ on Human Cervix Tissue

Specifications

Immunogen	Recombinant Human DOG1
Isotype	IgG1, kappa
Concentration	100 µg /100 µl
Uniprot Number	Q5XXA6
Purity	Protein A/G Affinity Purified

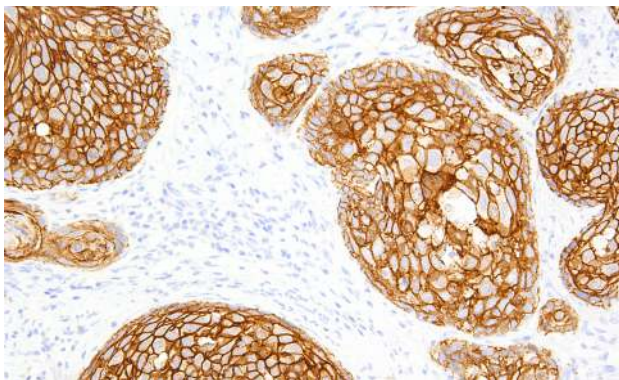
Application Information

Application	Immunohistochemistry
Formulation	Liquid
Species Reactivity	Human
Storage Buffer	PBS, pH 7.4 with 0.02% Sodium Azide

E-cadherin

Clone: AHC0103 | **Cat. No.** HY000103 | **Source:** Mouse Monoclonal

Epithelial cadherin (E-cadherin) also known as cadherin-1, is an intercellular adhesion molecule present in epithelial cells. E-cadherin regulates bacterial adhesion to mammalian cells. Deficiencies or loss of function of E-cadherin is associated with cancer progression via increased invasion, metastasis, or proliferation of tumour cells. SensiStain™ Anti-E-cadherin Antibody is created to detect E-cadherin and is a valuable tool for use in cancer.



E-cadherin SensiStain™ on Human Cervix Tissue

Specifications

Immunogen	Human E-cadherin
Isotype	IgG1, kappa
Concentration	100 µg / 100 µl
Uniprot Number	P12830
Purity	Protein A/G Affinity Purified

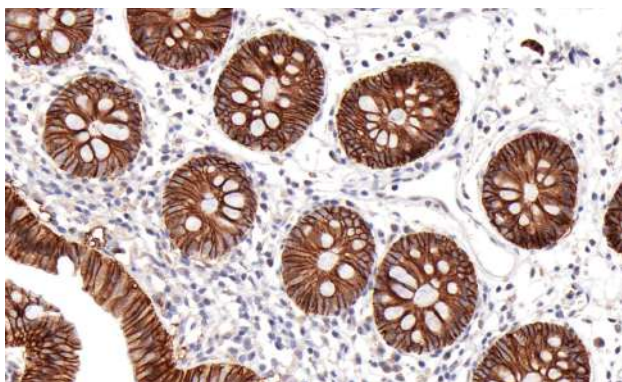
Application Information

Application	Immunohistochemistry
Formulation	Liquid
Species Reactivity	Human
Storage Buffer	PBS, pH 7.4 with 0.02% Sodium Azide

Ep-CAM/Epithelial Specific Antigen

Clone: AHC0106 | **Cat. No.** HY000106 | **Source:** Mouse Monoclonal

SensiStain™ Anti-Ep-CAM/Epithelial Specific Antigen is specific for the detection of epithelial cell adhesion molecule or Ep-CAM, which is a transmembrane glycoprotein involved in cell processes, such as cell signaling, migration, proliferation, and differentiation. The presence of Ep-CAM was first identified in human colon carcinoma. Today studies have shown that Ep-CAM is also expressed in human epithelial tissues and other carcinomas.

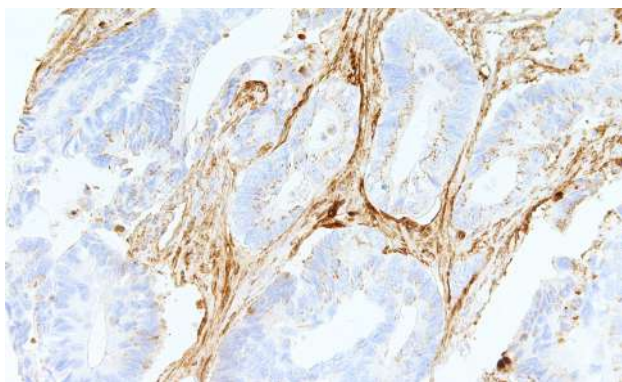


Ep-CAM SensiStain™ on Human Colon Tissue

Fibronectin

Clone: AHC0115 | **Cat. No.** HY000115 | **Source:** Mouse Monoclonal

SensiStain™ Anti-Fibronectin Antibody is designed for the detection of the glycoprotein fibronectin, which contributes to cell migration, adhesion, and metastasis.



Fibronectin SensiStain™ on Human Colon Tissue

Specifications

Immunogen	Recombinant Human Ep-CAM/Epithelial Specific Antigen
Isotype	IgG1, kappa
Concentration	100 µg / 100 µl
Uniprot Number	P16422
Purity	Protein A/G Affinity Purified

Application Information

Application	Immunohistochemistry
Formulation	Liquid
Species Reactivity	Human
Storage Buffer	PBS, pH 7.4 with 0.02% Sodium Azide

Specifications

Immunogen	Recombinant Human Fibronectin
Isotype	IgG1
Concentration	100 µg / 100 µl
Uniprot Number	Q8NAU1
Purity	Protein A/G Affinity Purified

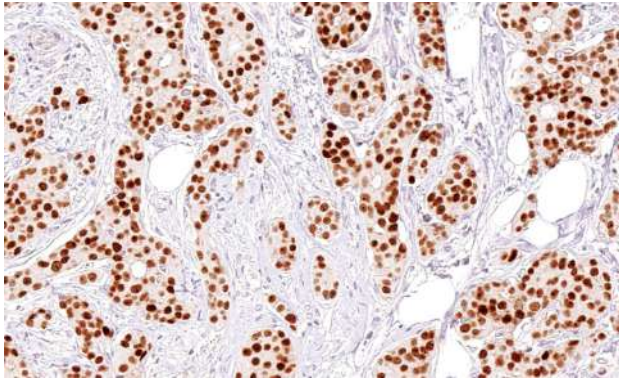
Application Information

Application	Immunohistochemistry
Formulation	Liquid
Species Reactivity	Human
Storage Buffer	PBS, pH 7.4 with 0.02% Sodium Azide

GATA3

Clone: AHC0123 | **Cat. No.** HY000123 | **Source:** Mouse Monoclonal

SensiStain™ Anti-GATA3 Antibody detects GATA3, a transcription factor important in cell proliferation, development, and differentiation.



GATA3 SensiStain™ on Human Breast Tissue

Specifications

Immunogen	Recombinant Human GATA3
Isotype	IgG1
Concentration	100 µg / 100 µl
Uniprot Number	P23771
Purity	Protein A/G Affinity Purified

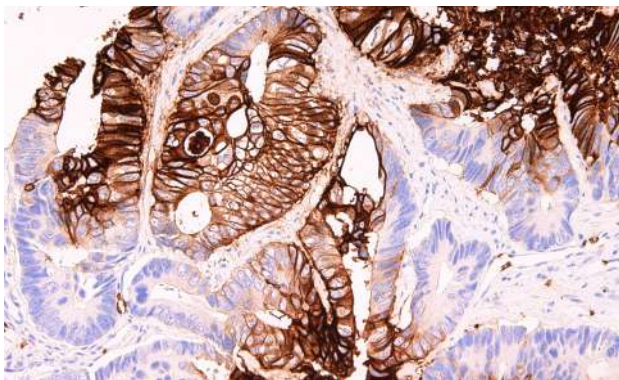
Application Information

Application	Immunohistochemistry, ELISA
Formulation	Liquid
Species Reactivity	Human
Storage Buffer	PBS, pH 7.4 with 0.02% Sodium Azide

GLUT1

Clone: AHC0126 | **Cat. No.** HY000126 | **Source:** Mouse Monoclonal

SensiStain™ Anti-GLUT1 Antibody is designed to detect GLUT1 in human tissues. Glucose transporter type I or GLUT1 or SCL2A1 is a glucose transporter present in the blood-brain barrier as well as erythrocytes.



GLUT1 SensiStain™ on Human Colon Tissue

Specifications

Immunogen	Synthetic GLUT1 Peptide
Isotype	IgG2a
Concentration	100 µg / 100 µl
Uniprot Number	P11166
Purity	Protein A/G Affinity Purified

Application Information

Application	Immunohistochemistry, ELISA
Formulation	Liquid
Species Reactivity	Human
Storage Buffer	PBS, pH 7.4 with 0.02% Sodium Azide

Glycophorin A

Clone: AHC0129 | **Cat. No.** HY000129 | **Source:** Mouse Monoclonal

SensiStain™ Anti-Glycophorin A Antibody detects for the presence of Glycophorin A. Glycophorin A (GPA) alongside with Glycophorin B (GPB) are erythrocyte blood group determinants that minimize erythrocyte aggregation during the circulation of blood. Thus study of glycophorin A is useful to understand processes of erythroid cell development, and to aid in identifying erythroid leukemias.

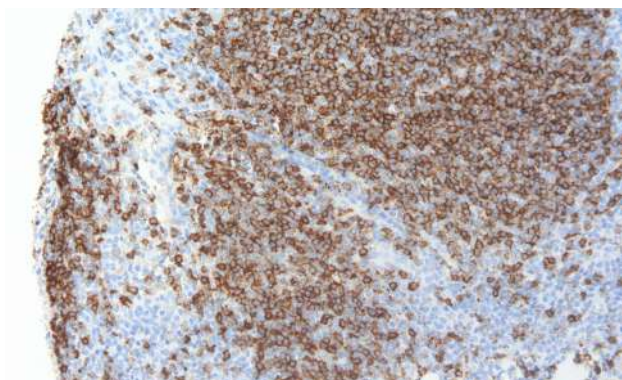


Glycophorin A SensiStain™ on Human Spleen Tissue

Hairy Cell Leukemia

Clone: AHC0134 | **Cat. No.** HY000134 | **Source:** Mouse Monoclonal

SensiStain™ Anti-Hairy Cell Leukemia Antibody stains various B-cells in the follicular mantle zone and virtually all cases of hairy cell leukemia. It is a valuable antibody to detect for hairy cell leukemia samples and can also stain high grade B-cell lymphomas.



Hairy Cell Leukemia SensiStain™ on Human Tonsil Tissue

Specifications

Immunogen	Purified Human Glycophorin A
Isotype	IgG2a, kappa
Concentration	100 µg / 100 µl
Uniprot Number	P02724
Purity	Protein A/G Affinity Purified

Application Information

Application	Immunohistochemistry
Formulation	Liquid
Species Reactivity	Human
Storage Buffer	PBS, pH 7.4 with 0.02% Sodium Azide

Specifications

Immunogen	Cells derived from large cell lymphoma
Isotype	IgM
Quantity	0.5 ml
Uniprot Number	N/A
Purity	Cell Culture Neat Supernatant

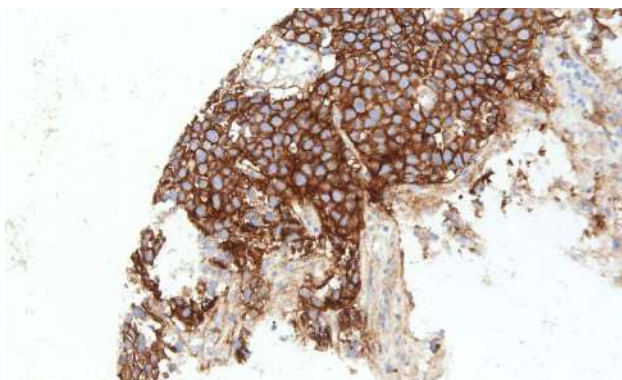
Application Information

Application	Immunohistochemistry
Formulation	Liquid
Species Reactivity	Human
Storage Buffer	Neat Supernatant with 0.02% sodium azide

hENT1

Clone: AHC0140 | **Cat. No.** HY000140 | **Source:** Mouse Monoclonal

Human Equilibrative Nucleoside Transporter 1 (hENT1) mediates the cellular uptake of physiologic nucleosides, adenosines, and many anti-cancer drugs, including gemcitabine, cytarabine, and decitabine. A deficiency of hENT1 may lead to drug resistance, while the high levels of hENT1 protein in the plasma membrane is an indicator of the efficiency of the drugs. SensiStain™ Anti-hENT1 is designed to detect for the presence of human ENT1.

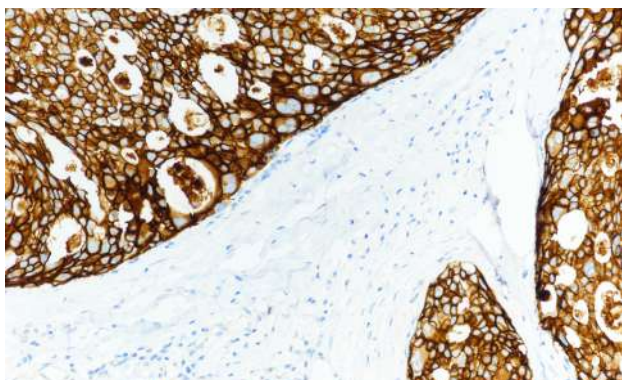


hENT1 SensiStain™ on Human Ovary Tissue

Her2/Neu

Clone: AHC0142 | **Cat. No.** HY000142 | **Source:** Mouse Monoclonal

SensiStain™ Anti-Her2/Neu Antibody is designed for detection of Her2 protein expressing tissue or lysates. Her2 is a relevant biomarker for Her2-positive breast cancers. It is a proto-oncogene, and a transmembrane receptor tyrosine kinase that is clinically indicated in a number of carcinomas. SensiStain™ Anti-Her2/Neu Antibody is a sensitive research tool, which enables end users to confidently conduct research on tumors.



Her2/Neu SensiStain™ on Human Breast Tissue

Specifications

Immunogen	Recombinant Human hENT1
Isotype	IgG1
Concentration	100 µg / 100 µl
Uniprot Number	Q99808
Purity	Protein A/G Affinity Purified

Application Information

Application	Immunohistochemistry
Formulation	Liquid
Species Reactivity	Human
Storage Buffer	PBS, pH 7.4 with 0.02% Sodium Azide

Specifications

Immunogen	Recombinant Human Her2/Neu
Isotype	IgG2a
Concentration	100 µg / 100 µl
Uniprot Number	P04626
Purity	Protein A/G Affinity Purified

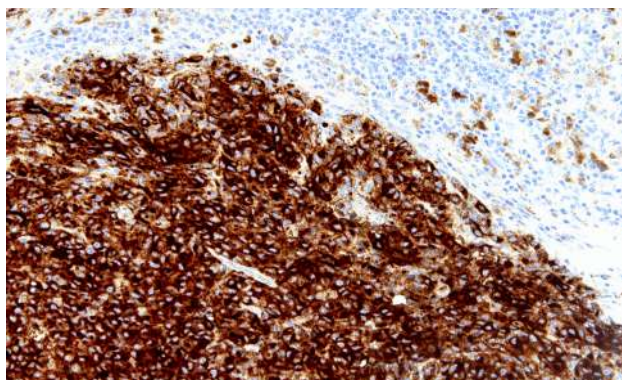
Application Information

Application	Immunohistochemistry, Western Blot, ELISA
Formulation	Liquid
Species Reactivity	Human
Storage Buffer	PBS, pH 7.4 with 0.02% Sodium Azide

HMB-45

Clone: AHC0147 | **Cat. No.** HY000147 | **Source:** Mouse Monoclonal

SensiStain™ Anti-HMB-45 Antibody is designed for detection of samples associated with melanoma. HMB-45 is specific for an antigen present in immature melanosomes, cutaneous melanocytes, and prenatal and infantile retinal pigment epithelium cells, therefore is a valuable marker to confirm melanoma.



HMB-45 SensiStain™ on Human Melanoma Tissue

Specifications

Immunogen	Human Melanoma
Isotype	IgG1, kappa
Concentration	100 µg / 100 µl
Uniprot Number	P40967
Purity	Protein A/G Affinity Purified

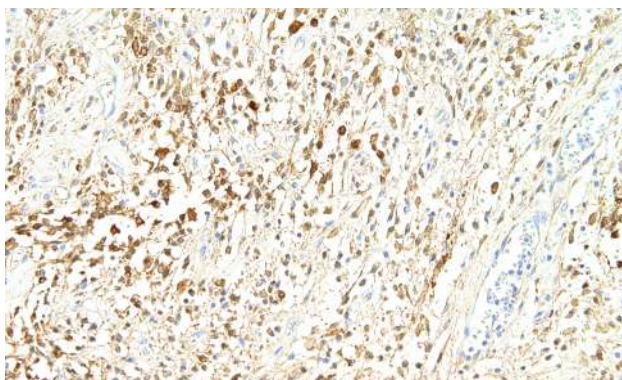
Application Information

Application	Immunohistochemistry
Formulation	Liquid
Species Reactivity	Human
Storage Buffer	PBS, pH 7.4 with 0.02% Sodium Azide

IDH1 R132H

Clone: ACH0270 | **Cat. No.** HY000270 | **Source:** Mouse Monoclonal

SensiStain™ Anti-IDH1 R132H Antibody is designed to detect the R132H mutation in IDH1. IDH1 R132H may have implications in patients with glioma as the amino acid substitution at position 132 has been linked to reducing proliferation in cells, and reduced migration and invasion.



IDH1 R132H SensiStain™ on Human Brain Tissue (glioma)

Specifications

Immunogen	Synthetic IDH1 R132H Peptide
Isotype	IgG1
Concentration	100 µg / 100 µl
Uniprot Number	N/A
Purity	Protein A/G Affinity Purified

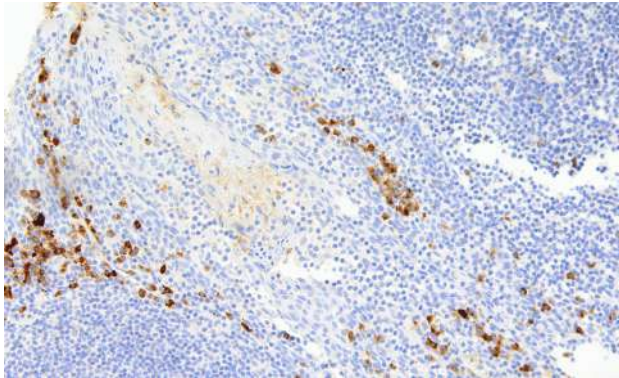
Application Information

Application	Immunohistochemistry, ELISA
Formulation	Liquid
Species Reactivity	Human
Storage Buffer	PBS, pH 7.4 with 0.02% Sodium Azide

Kappa

Clone: AHC0155 | **Cat. No.** HY000155 | **Source:** Mouse Monoclonal

SensiStain™ Anti-Kappa Antibody is a valuable tool to detect the presence of kappa. Kappa has been indicated as an aid for the identification of cancers, such as leukemia, plasmacytoma, and certain non-Hodgkin's lymphoma in which the single light chain class is restricted.



Kappa SensiStain™ on Human Tonsil Tissue

Specifications

Immunogen	Recombinant Human Kappa
Isotype	IgG2a
Concentration	100 µg / 100 µl
Uniprot Number	P19838
Purity	Protein A/G Affinity Purified

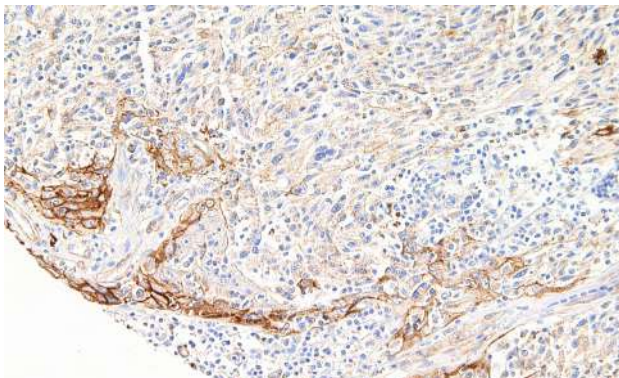
Application Information

Application	Immunohistochemistry, Western Blot
Formulation	Liquid
Species Reactivity	Human
Storage Buffer	PBS, pH 7.4 with 0.02% Sodium Azide

KBA.62 (Melanoma Associated Antigen)

Clone: AHC0156 | **Cat. No.** HY000156 | **Source:** Mouse Monoclonal

SensiStain™ Anti-KBA.62 (Melanoma Associated Antigen) Antibody is designed for use in detecting melanoma. A useful marker for primary and metastatic melanomas, it can be used for *in vitro* studies in melanoma biology and to differentiate metastatic amelanotic melanomas from poorly differentiated carcinomas.



KBA.62 (Melanoma Associated Antigen) SensiStain™ on Human Skin Tissue

Specifications

Immunogen	Human KAL Cells derived from Lymphs
Isotype	IgG2a, kappa
Concentration	100 µg / 100 µl
Uniprot Number	N/A
Purity	Protein A/G Affinity Purified

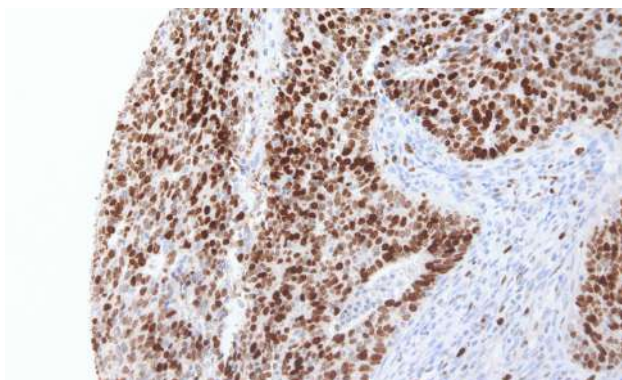
Application Information

Application	Immunohistochemistry
Formulation	Liquid
Species Reactivity	Human
Storage Buffer	PBS, pH 7.4 with 0.02% Sodium Azide

Ki-67

Clone: AHC0157 | **Cat. No.** HY000157 | **Source:** Mouse Monoclonal

SensiStain™ Anti-Ki-67 Antibody can be used to detect the presence, absence, or level of expression of Ki-67. As a nuclear, non-histone protein that is expressed only during active phases of the cell cycle (G1, S, G2 and M), but not in the resting phases (G0 and G1 early phase); Ki-67 is linked to cell proliferation. It is used as a marker to grade tumor proliferation rates.



Ki-67 SensiStain™ on Human Cervix Tissue

Specifications

Immunogen	Recombinant Human Ki-67
Isotype	IgG2b
Concentration	100 µg / 100 µl
Uniprot Number	P46013
Purity	Protein A/G Affinity Purified

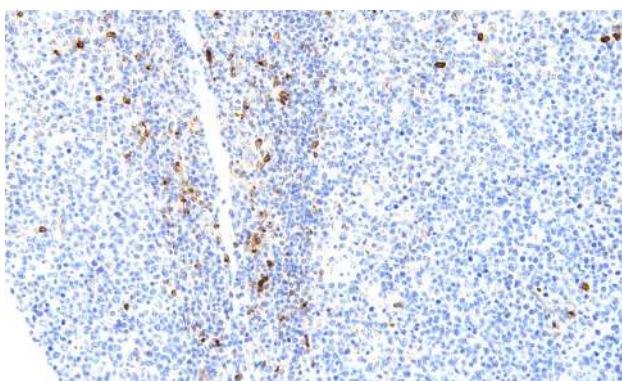
Application Information

Application	Immunohistochemistry, ELISA
Formulation	Liquid
Species Reactivity	Human
Storage Buffer	PBS, pH 7.4 with 0.02% Sodium Azide

LAG3

Clone: ACH0276 | **Cat. No.** HY000276 | **Source:** Mouse Monoclonal

Lymphocyte-activation gene 3 (LAG3) is an immune checkpoint receptor and has biologic effects on T cell function. SensiStain™ Anti-LAG3 Antibody is designed to detect for human LAG3, and is a valuable tool for research in immunotherapy and immune checkpoint studies.



LAG3 SensiStain™ on Human Tonsil Tissue

Specifications

Immunogen	Recombinant Human LAG3
Isotype	IgG2b, kappa
Concentration	100 µg / 100 µl
Uniprot Number	P18627
Purity	Protein A/G Affinity Purified

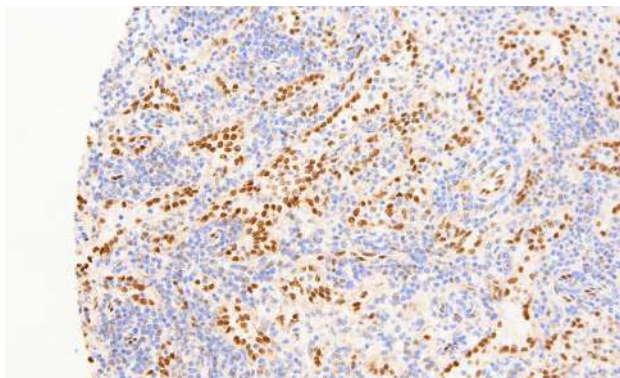
Application Information

Application	Immunohistochemistry, ELISA
Formulation	Liquid
Species Reactivity	Human
Storage Buffer	PBS, pH 7.4 with 0.02% Sodium Azide

LMO2

Clone: AHC0162 | **Cat. No.** HY000162 | **Source:** Mouse Monoclonal

Designed to detect the presence of the oncoprotein LMO2 (LIM-Only transcription factor 2, RBTN2, or TTG2), SensiStain™ Anti-LMO2 Antibody is in ready-to-use format. LMO2 has a role in angiogenesis and hematopoiesis, and has been found to be expressed in erythroid and myeloid precursors, megakaryocytes, lymphoblastic and acute myeloid leukemia.



LMO2 SensiStain™ on Human Spleen Tissue

Specifications

Immunogen	Recombinant Human LMO2
Isotype	IgG1, kappa
Quantity	0.5 ml
Uniprot Number	P25791
Purity	Cell Culture Neat Supernatant

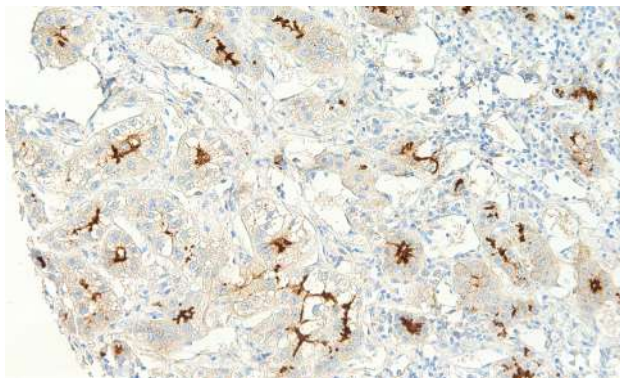
Application Information

Application	Immunohistochemistry
Formulation	Liquid
Species Reactivity	Human
Storage Buffer	Neat Supernatant with 0.02% Sodium Azide

MDR3

Clone: AHC0170 | **Cat. No.** HY000170 | **Source:** Mouse Monoclonal

SensiStain™ Anti-MDR3 Antibody has been developed and designed to sensitively detect for MDR3. MDR3 (Multidrug Resistance 3) is a membrane-associated protein belonging to the superfamily of ATP-binding cassette transporters. Defects in MDR3 have been associated with progressive familial intrahepatic cholestasis type 3 and gallbladder disease type 1.



MDR3 SensiStain™ on Human Liver Tissue

Specifications

Immunogen	Recombinant Human MDR3
Isotype	IgG1, kappa
Concentration	100 µg / 100 µl
Uniprot Number	O43249
Purity	Protein A/G Affinity Purified

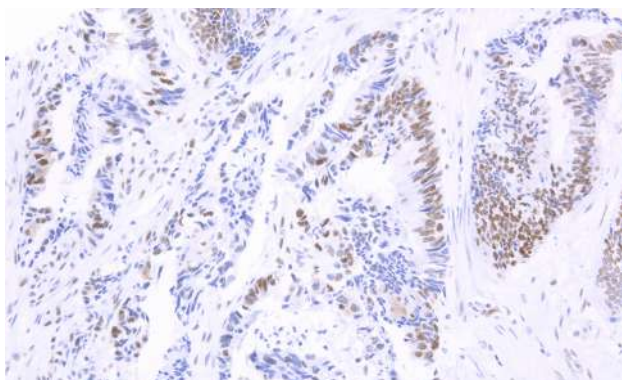
Application Information

Application	Immunohistochemistry, ELISA
Formulation	Liquid
Species Reactivity	Human
Storage Buffer	PBS, pH 7.4 with 0.02% Sodium Azide

MLH1

Clone: AHC0172 | **Cat. No.** HY000172 | **Source:** Mouse Monoclonal

MutL Homolog 1 or MLH1, is a protein involved in the mismatch-repair pathway. SensiStain™ Anti-MLH1 Antibody is ready to be used for detection of MLH1. This protein has been commonly associated with hereditary non-polyposis colorectal cancer, thus is a useful marker for the disease. MLH1 is optimized when paired in an IHC panel with MSH6, MSH2, and PMS2. **abm's** has available the entire MMR-series panel through our SensiStain™ product line.

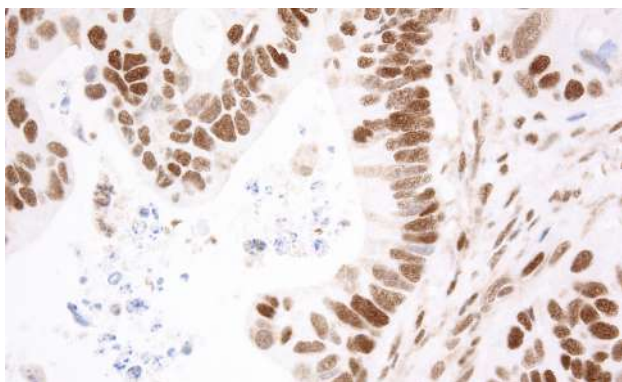


MLH1 SensiStain™ on Human Colon Tissue

MSH2

Clone: AHC0174 | **Cat. No.** HY000174 | **Source:** Mouse Monoclonal

SensiStain™ Anti-MSH2 Antibody is created to detect MutL Homolog 2 (MSH2) protein that is known to be involved in the mismatch-repair pathway. Anti-MSH2 is usually used alongside with the panel with MSH6, MLH1, and PMS2 to detect samples with microsatellite instability.



MSH2 SensiStain™ on Human Colon Tissue

Specifications

Immunogen	Recombinant Human MLH1
Isotype	IgG2a
Concentration	100 µg / 100 µl
Uniprot Number	P40692
Purity	Protein A/G Affinity Purified

Application Information

Application	Immunohistochemistry, ELISA
Formulation	Liquid
Species Reactivity	Human
Storage Buffer	PBS, pH 7.4 with 0.02% Sodium Azide

Specifications

Immunogen	Recombinant Human MSH2
Isotype	IgG2b
Concentration	100 µg / 100 µl
Uniprot Number	P43246
Purity	Protein A/G Affinity Purified

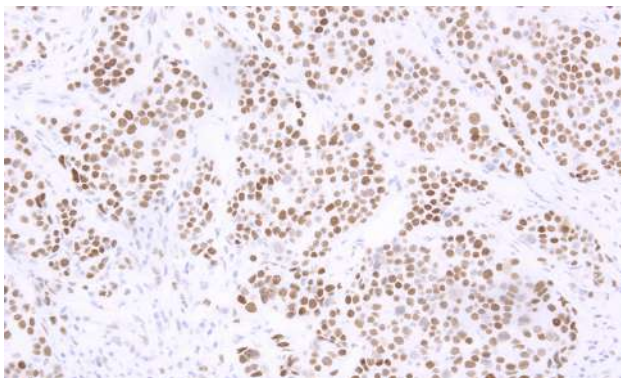
Application Information

Application	Immunohistochemistry, ELISA
Formulation	Liquid
Species Reactivity	Human
Storage Buffer	PBS, pH 7.4 with 0.02% Sodium Azide

MSH6

Clone: AHC0175 | **Cat. No.** HY000175 | **Source:** Mouse Monoclonal

SensiStain™ Anti-MSH6 Antibody was developed alongside MLH1, MSH2, and PMS2 to complete our MMR-series of antibodies for IHC research use. MutS Homolog 6 or MSH6, is a protein involved in the mismatch-repair pathway, and been commonly associated with hereditary non-polyposis colorectal cancer, thus is a useful marker for the disease.

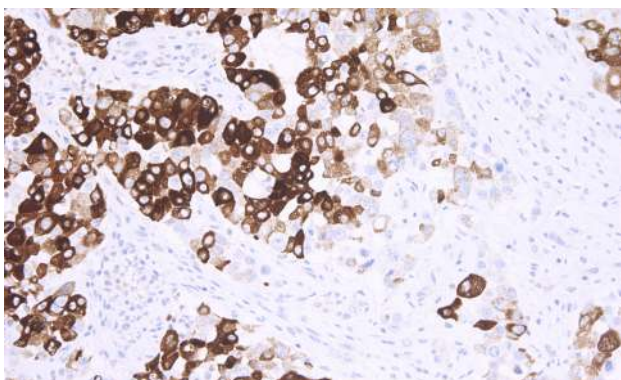


MSH6 SensiStain™ on Human Ovary Tissue

MUC5AC

Clone: AHC0178 | **Cat. No.** HY000178 | **Source:** Mouse Monoclonal

SensiStain™ Anti-MUC5AC Antibody detects for mucin 5AC (MUC5AC), a secretory-type mucin found in columnar mucous cells of surface gastric epithelium, in goblet cells of the fetal, and in precancerous colon, but is not found in normal colon cells. Therefore, it is a unique marker to detect colorectal carcinomas in which over-expression have been associated with carcinogenesis, malignant potential, and progression.



MUC5AC SensiStain™ on Human Pancreas Tissue

Specifications

Immunogen	Recombinant Human MSH6
Isotype	IgG1
Concentration	100 µg / 100 µl
Uniprot Number	P52701
Purity	Protein A/G Affinity Purified

Application Information

Application	Immunohistochemistry, ELISA
Formulation	Liquid
Species Reactivity	Human
Storage Buffer	PBS, pH 7.4 with 0.02% Sodium Azide

Specifications

Immunogen	Recombinant Human MUC5AC
Isotype	IgG1
Concentration	100 µg / 100 µl
Uniprot Number	P98088
Purity	Protein A/G Affinity Purified

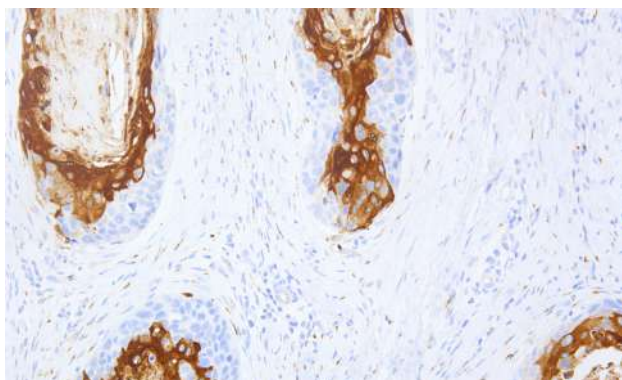
Application Information

Application	Immunohistochemistry
Formulation	Liquid
Species Reactivity	Human
Storage Buffer	PBS, pH 7.4 with 0.02% Sodium Azide

MUC6

Clone: AHC0179 | **Cat. No.** HY000179 | **Source:** Mouse Monoclonal

Mucin 6 or MUC6 is a glycoprotein found to be expressed in various tissues such as the pyloric glands of the antrum, bronchial epithelium and in the Müller ducts of the endocervix and urethral epithelium. Anti-MUC6 stains the epithelial surface of the normal gastrointestinal tract and is found to be useful for differentiating fetal, precancerous and cancerous colonic mucosa.



MUC6 SensiStain™ on Human Throat Tissue

Specifications

Immunogen	Recombinant Human MUC6
Isotype	IgG2a
Concentration	100 µg / 100 µl
Uniprot Number	Q6W4X9
Purity	Protein A/G Affinity Purified

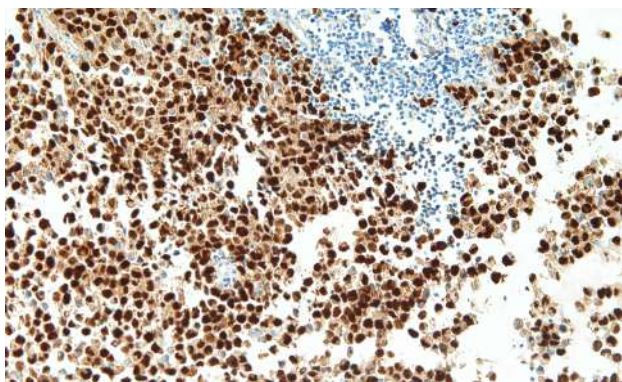
Application Information

Application	Immunohistochemistry, Western Blot, ELISA
Formulation	Liquid
Species Reactivity	Human
Storage Buffer	PBS, pH 7.4 with 0.02% Sodium Azide

Myogenin

Clone: AHC0184 | **Cat. No.** HY000184 | **Source:** Mouse Monoclonal

SensiStain™ Anti-Myogenin Antibody detects for the presence or absence of myogenin, which is found strictly in cells of skeletal muscle origin. It is typically used as a biomarker for tumors of the muscle lineage, including alveolar rhabdomyosarcomas.



Myogenin SensiStain™ on Human Rhabdomyosarcoma Tissue

Specifications

Immunogen	Recombinant Human Myogenin
Isotype	IgG1, kappa
Concentration	100 µg / 100 µl
Uniprot Number	P15173
Purity	Protein A/G Affinity Purified

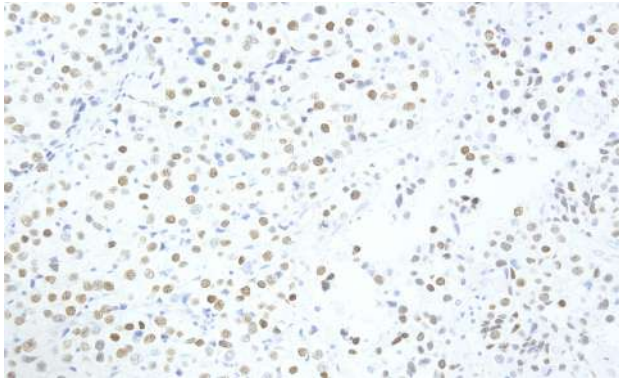
Application Information

Application	Immunohistochemistry
Formulation	Liquid
Species Reactivity	Human
Storage Buffer	PBS, pH 7.4 with 0.02% Sodium Azide

Nanog

Clone: AHC0187 | **Cat. No.** HY000187 | **Source:** Mouse Monoclonal

SensiStain™ Anti-Nanog Antibody stains for the presence of Nanog, a homeoprotein that functions with pluripotent factors such as Oct4 and Sox2 to maintain embryonic stem cell pluripotency. Expression of nanog has been shown to be present in carcinomas, such as seminoma, dysgerminoma, and embryonal carcinoma.

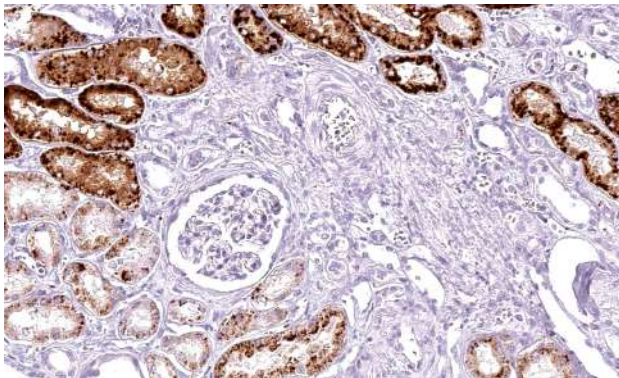


Nanog SensiStain™ on Human Ovary Tissue

Napsin A

Clone: AHC0188 | **Cat. No.** HY000188 | **Source:** Mouse Monoclonal

SensiStain™ Anti-Napsin A Antibody is designed and developed to detect for the presence of Napsin A in tissues. Napsin A is a pepsin-like aspartic proteinase, closely related to Napsin B, expressed mainly in the lung and kidney which is involved in the correct folding, targeting, and control of aspartic proteinase zymogens.



Napsin A SensiStain™ on Human Kidney Tissue

Specifications

Immunogen	Recombinant Human Nanog
Isotype	IgG1
Concentration	100 µg / 100 µl
Uniprot Number	Q9H9S0
Purity	Protein A/G Affinity Purified

Application Information

Application	Immunohistochemistry, ELISA
Formulation	Liquid
Species Reactivity	Human
Storage Buffer	PBS, pH 7.4 with 0.02% Sodium Azide

Specifications

Immunogen	Recombinant Human Napsin A
Isotype	IgG1
Concentration	100 µg / 100 µl
Uniprot Number	O96009
Purity	Protein A/G Affinity Purified

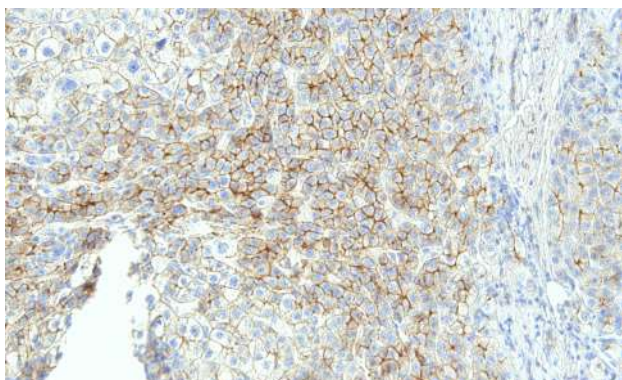
Application Information

Application	Immunohistochemistry, ELISA
Formulation	Liquid
Species Reactivity	Human
Storage Buffer	PBS, pH 7.4 with 0.02% Sodium Azide

N-cadherin

Clone: AHC0189 | **Cat. No.** HY000189 | **Source:** Mouse Monoclonal

SensiStain™ Anti-N-cadherin Antibody stains for the presence of n-cadherin, known as Cadherin-2 (CDH2) or Neural Cadherin (NCAD); which is a transmembrane cell adhesion molecule originally detected in nervous tissues. It is important in the process of embryogenesis as it is involved in gastrulation and neural crest development. N-cadherin over-expression may be associated with health concerns, such as cancer cell migration, and dilated cardiomyopathy.

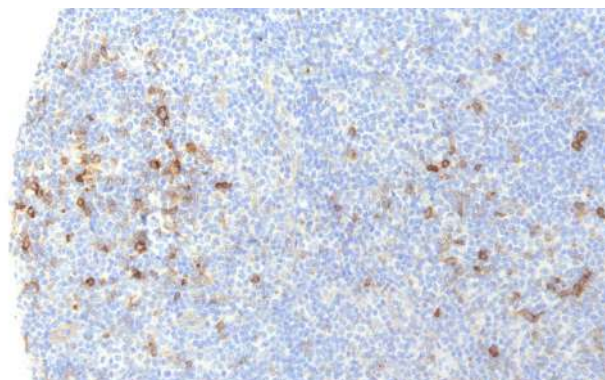


N-cadherin SensiStain™ on Human Liver Tissue

OX40

Clone: AHC0272 | **Cat. No.** HY000272 | **Source:** Mouse Monoclonal

OX40 or CD134 is encoded by the TNFRSF4 gene, a member of the TNF-receptor superfamily. SensiStain™ Anti-OX40 Antibody detects the presence of OX40, which plays a major role in proliferation and differentiation of naive T cells into a population of heterogeneous effector T cells, and has been found to promote proliferation and survival of CD8 T cells. Thus, OX40 and its ligand, OX40L, is a key player in pathways involving the immune system, such as long-term T-cell immunity.



OX40 SensiStain™ on Human Tonsil Tissue

Specifications

Immunogen	Recombinant Human N-cadherin
Isotype	IgG2a
Quantity	0.5 ml
Uniprot Number	P19022
Purity	Cell Culture Neat Supernatant

Application Information

Application	Immunohistochemistry
Formulation	Liquid
Species Reactivity	Human
Storage Buffer	Neat Supernatant with 0.02% Sodium Azide

Specifications

Immunogen	Recombinant OX40
Isotype	IgG1
Concentration	100 µg / 100 µl
Uniprot Number	P43489
Purity	Protein A/G Affinity Purified

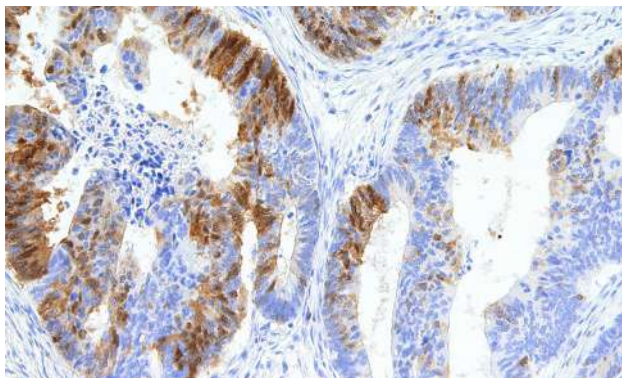
Application Information

Application	Immunohistochemistry, ELISA
Formulation	Liquid
Species Reactivity	Human
Storage Buffer	PBS, pH 7.4 with 0.02% Sodium Azide

p16^{INK4A} - Concentrate (100 µl)

Clone: IHC016 | **Cat. No.** HY000400 | **Source:** Mouse Monoclonal

The p16 (p16^{INK4A}) protein is a cyclin-dependent kinase inhibitor that plays an important regulatory role in the cell cycle. By controlling the transition between the G1 and S phases through regulation of retinoblastoma protein, p16 decelerates cellular differentiation and therefore acts as a tumor suppressor, making it the key marker in several human cancers.

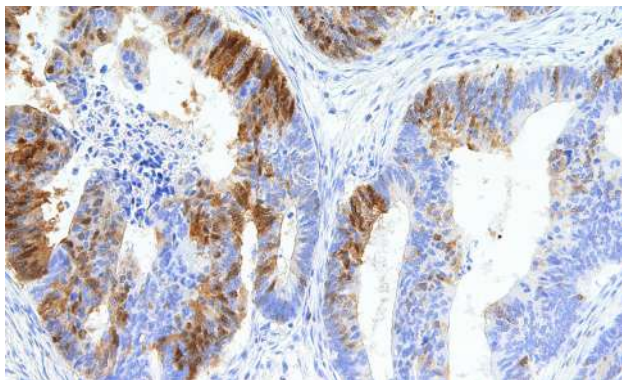


p16^{INK4A} - Concentrate SensiStain™ on Human Breast Tissue

p16^{INK4A} - Concentrate (1.0 ml)

Clone: IHC016 | **Cat. No.** HY000401 | **Source:** Mouse Monoclonal

The p16 (p16^{INK4A}) protein is a cyclin-dependent kinase inhibitor that plays an important regulatory role in the cell cycle. By controlling the transition between the G1 and S phases through regulation of retinoblastoma protein, p16 decelerates cellular differentiation and therefore acts as a tumor suppressor, making it the key marker in several human cancers.



p16^{INK4A} - Concentrate SensiStain™ on Human Cervix Tissue

Specifications

Immunogen	Recombinant Human p16 ^{INK4A} C-terminus protein
Isotype	IgG1
Quantity	100 µl
Uniprot Number	P42771
Purity	Protein A/G Affinity Purified

Application Information

Application	Immunohistochemistry, ELISA
Formulation	Liquid
Species Reactivity	Human
Storage Buffer	Tris Buffer, pH 7.3 - 7.7, 1% BSA with <0.1% Sodium Azide

Specifications

Immunogen	Recombinant Human p16 ^{INK4A} C-terminus protein
Isotype	IgG1
Quantity	1.0 ml
Uniprot Number	P42771
Purity	Protein A/G Affinity Purified

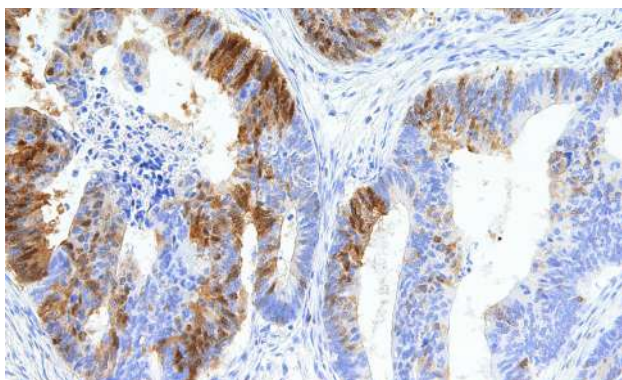
Application Information

Application	Immunohistochemistry, ELISA
Formulation	Liquid
Species Reactivity	Human
Storage Buffer	Tris Buffer, pH 7.3 - 7.7, 1% BSA with <0.1% Sodium Azide

p16^{INK4A} - Predilute

Clone: IHC016 | **Cat. No.** HY000402 | **Source:** Mouse Monoclonal

The p16 (p16^{INK4A}) protein is a cyclin-dependent kinase inhibitor that plays an important regulatory role in the cell cycle. By controlling the transition between the G1 and S phases through regulation of retinoblastoma protein, p16 decelerates cellular differentiation and therefore acts as a tumor suppressor, making it the key marker in several human cancers.

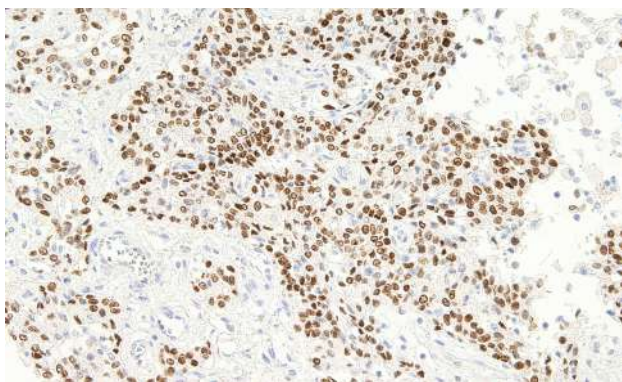


p16^{INK4A} - Predilute SensiStain™ on Human Colon Tissue

p40

Clone: AHC0201 | **Cat. No.** HY000201 | **Source:** Mouse Monoclonal

SensiStain™ Anti-p40 Antibody is developed and designed to detect for the presence of p40. Anti-p40 specifically recognizes the N-terminal truncated isoform of p63 (Δ Np63) that is demonstrated to be more specific to squamous cell and basal cells. p40 and p63 are different in structure and exploit opposite functions, as p40 offers more specific detection of a subset of lung adenocarcinomas and lymphomas.



p40 SensiStain™ on Human Bladder Tissue

Specifications

Immunogen	Recombinant Human p16 ^{INK4A} C-terminus protein
Isotype	IgG1
Quantity	7.0 ml
Uniprot Number	P42771
Purity	Protein A/G Affinity Purified

Application Information

Application	Immunohistochemistry, ELISA
Formulation	Liquid
Species Reactivity	Human
Storage Buffer	Tris Buffer, pH 7.3 - 7.7, 1% BSA with <0.1% Sodium Azide

Specifications

Immunogen	Synthetic p40 Peptide
Isotype	IgG1
Concentration	100 µg / 100 µl
Uniprot Number	O00374
Purity	Protein A/G Affinity Purified

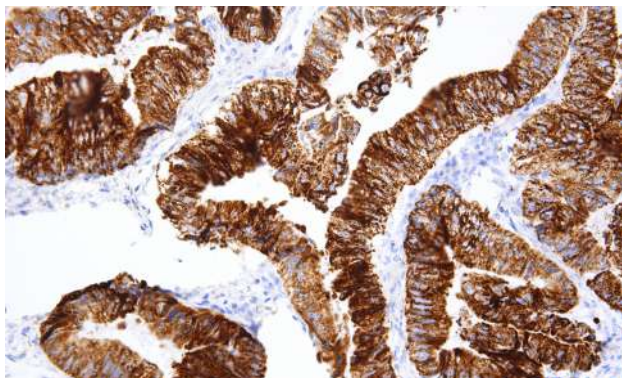
Application Information

Application	Immunohistochemistry, ELISA
Formulation	Liquid
Species Reactivity	Human
Storage Buffer	PBS, pH 7.4 with 0.02% Sodium Azide

p504s

Clone: AHC0206 | **Cat. No.** HY000206 | **Source:** Mouse Monoclonal

SensiStain™ Anti-p504s Antibody detects for the presence or absence of p504s (also known as α -methylacyl coenzyme A racemase (AMACR)), which is an enzyme localized in the peroxisome and mitochondria. It plays a role in β -oxidation of branched chain fatty acids and bile synthesis. p504s is a tissue biomarker for cancers, such as prostate cancer, colorectal cancer, and high-grade prostatic intraepithelial neoplasia, which is a precursor lesion of prostate cancer.



p504s SensiStain™ on Human Colon Tissue

Specifications

Immunogen	Recombinant Human p504s
Isotype	IgG1
Concentration	100 μ g / 100 μ l
Uniprot Number	Q9UHK6
Purity	Protein A/G Affinity Purified

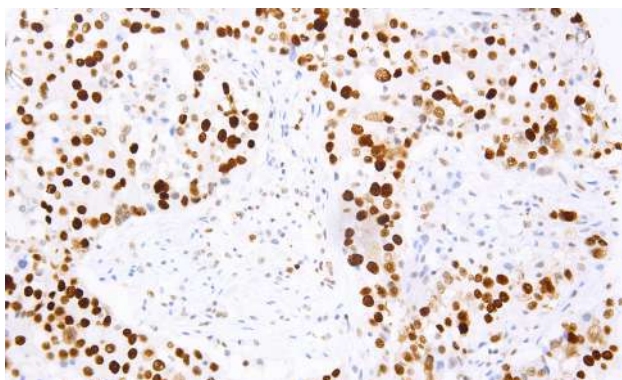
Application Information

Application	Immunohistochemistry, ELISA
Formulation	Liquid
Species Reactivity	Human
Storage Buffer	PBS, pH 7.4 with 0.02% Sodium Azide

p53

Clone: AHC0202 | **Cat. No.** HY000202 | **Source:** Mouse Monoclonal

SensiStain™ Anti-p53 Antibody is in ready-to-use format. Tumor protein 53 or p53 acts as a tumor suppressor and transcription factor involved in various activities, such as DNA repair, cell-cycle arrest and apoptosis, as a response to DNA damage and other stress factors. Anti-p53 staining has been found to be useful in differentiating uterine serous carcinoma and endometrioid carcinoma.



p53 SensiStain™ on Human Pancreas Tissue

Specifications

Immunogen	Recombinant Human p53
Isotype	IgG2b
Concentration	100 μ g / 100 μ l
Uniprot Number	P04637
Purity	Protein A/G Affinity Purified

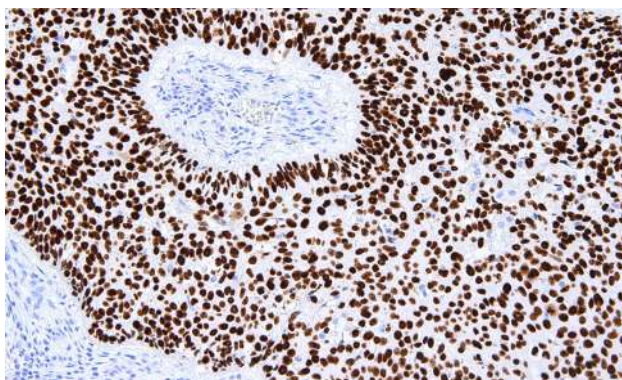
Application Information

Application	Immunohistochemistry, Western Blot, ELISA
Formulation	Liquid
Species Reactivity	Human
Storage Buffer	PBS, pH 7.4 with 0.02% Sodium Azide

p63

Clone: AHC0204 | **Cat. No.** HY000204 | **Source:** Mouse Monoclonal

SensiStain™ Anti-p63 Antibody is developed and designed to detect for the presence of p63. p63 is important in the process of development and differentiation, and has been identified as a useful marker for distinguishing between lung squamous cell carcinomas and adenocarcinomas.

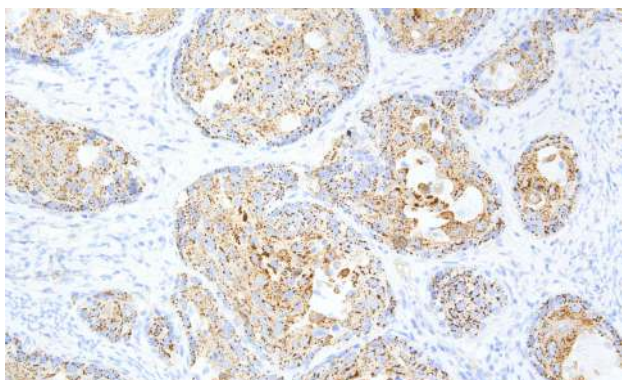


p63 SensiStain™ on Human Cervix Tissue

PAX-5

Clone: AHC0209 | **Cat. No.** HY000209 | **Source:** Mouse Monoclonal

SensiStain™ Anti-PAX-5 Antibody detects for the presence of PAX-5, a member of the paired box (PAX) family of transcription factors, and are key regulators in early development.



PAX-5 SensiStain™ on Human Cervix Tissue

Specifications

Immunogen	Recombinant Human p63
Isotype	IgG1
Concentration	100 µg / 100 µl
Uniprot Number	Q9H3D4
Purity	Protein A/G Affinity Purified

Application Information

Application	Immunohistochemistry, ELISA
Formulation	Liquid
Species Reactivity	Human
Storage Buffer	PBS, pH 7.4 with 0.02% Sodium Azide

Specifications

Immunogen	Recombinant Human PAX-5
Isotype	IgG1
Concentration	100 µg / 100 µl
Uniprot Number	Q02548
Purity	Protein A/G Affinity Purified

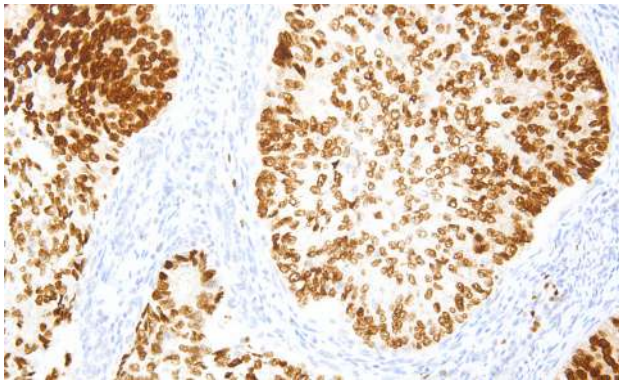
Application Information

Application	Immunohistochemistry
Formulation	Liquid
Species Reactivity	Human
Storage Buffer	PBS, pH 7.4 with 0.02% Sodium Azide

PAX8

Clone: AHC0210 | **Cat. No.** HY000210 | **Source:** Mouse Monoclonal

SensiStain™ Anti-PAX8 Antibody is in a ready-to-use format. PAX-8 belongs to the paired box (PAX) family of transcription factors, which play an important role in early development, such as with thyroid follicular cells and the expression of thyroid-specific genes; however mutations in the PAX8 gene have been found to be associated with thyroid follicular carcinomas.



PAX8 SensiStain™ on Human Endometrium Tissue

Specifications

Immunogen	Recombinant Human PAX8
Isotype	IgG2a
Concentration	100 µg / 100 µl
Uniprot Number	Q06710
Purity	Protein A/G Affinity Purified

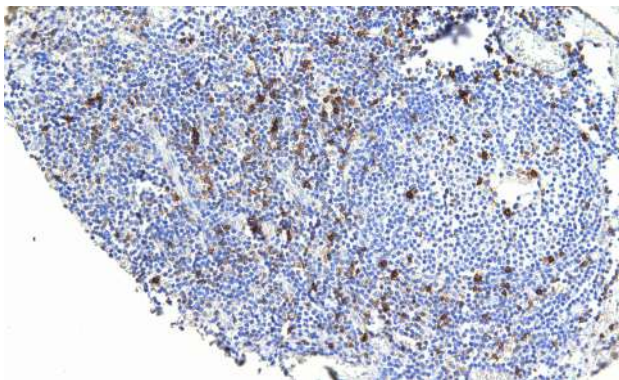
Application Information

Application	Immunohistochemistry, Western Blot, ELISA
Formulation	Liquid
Species Reactivity	Human
Storage Buffer	PBS, pH 7.4 with 0.02% Sodium Azide

PD-1

Clone: AHC0211 | **Cat. No.** HY000211 | **Source:** Mouse Monoclonal

SensiStain™ Anti-PD-1 Antibody is designed for detection of the programmed death 1 (PD-1) receptor protein, which is expressed on the surface of T cells when probing for cancer cells expressing PD-L1. Studies have discovered that blocking PD-1 may reduce tumors in certain cancers, thus becoming a highly sought out protein to study signaling pathways and the effects it has on cancer progression.



PD-1 SensiStain™ on Human Tonsil Tissue

Specifications

Immunogen	Recombinant Human PD1
Isotype	IgG2b
Concentration	100 µg / 100 µl
Uniprot Number	Q15116
Purity	Protein A/G Affinity Purified

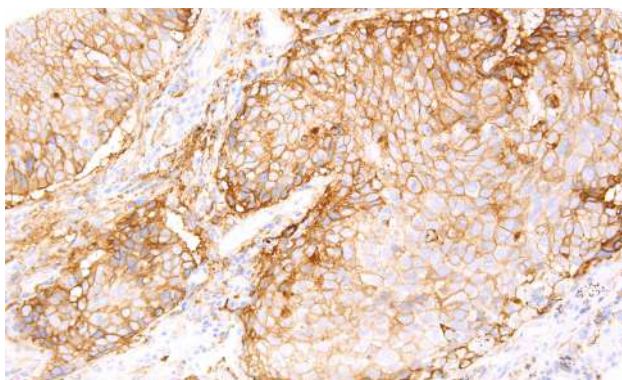
Application Information

Application	Immunohistochemistry, ELISA
Formulation	Liquid
Species Reactivity	Human
Storage Buffer	PBS, pH 7.4 with 0.02% Sodium Azide

PD-L1

Clone: AHC0271 | **Cat. No.** HY000271 | **Source:** Rabbit Monoclonal

SensiStain™ Anti-PD-L1 Antibody is a rabbit monoclonal antibody designed to detect Programmed Death-Ligand 1 (PD-L1), also known as CD274 or B7 Homolog 1 (B7-H1). PD-L1 is a transmembrane protein involved in suppressing the immune system making tumor cells resistant to CD8 T cell-mediated lysis through binding of the Programmed Death-1 (PD-1) receptor. Studies have shown overexpression of PD-L1 may allow cancer cells to evade the actions of the host's immune system.

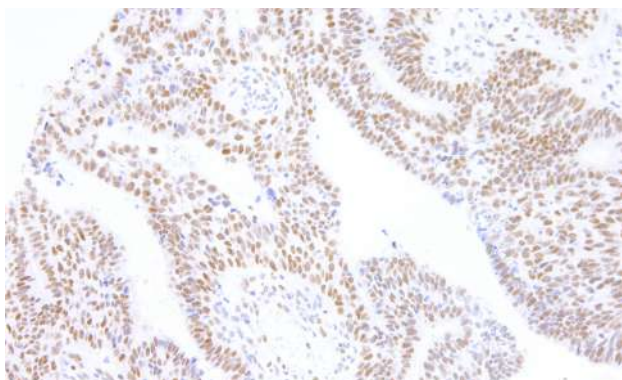


PD-L1 SensiStain™ on Human Liver Tissue

PMS2

Clone: AHC0217 | **Cat. No.** HY000217 | **Source:** Mouse Monoclonal

PMS2 (Postmeiotic Segregation Increased 2) is a DNA repair protein involved in mismatch repair. SensiStain™ Anti-PMS2 Antibody was developed alongside MLH1, MSH2, and MSH6 to complete our MMR-series for research use. PMS2 expression levels may theoretically be used as a screening tool for Lynch syndrome after a colorectal cancer diagnosis.



PMS2 SensiStain™ on Human Cervix Tissue

Specifications

Immunogen	Synthetic PD-L1 Peptide
Isotype	IgG
Quantity	0.5 ml
Uniprot Number	Q9NZQ7
Purity	Cell Culture Neat Supernatant

Application Information

Application	Immunohistochemistry, ELISA
Formulation	Liquid
Species Reactivity	Human
Storage Buffer	Neat Supernatant with 0.02% Sodium Azide

Specifications

Immunogen	Recombinant Human PMS2
Isotype	IgG1
Concentration	100 µg / 100 µl
Uniprot Number	P54278
Purity	Protein A/G Affinity Purified

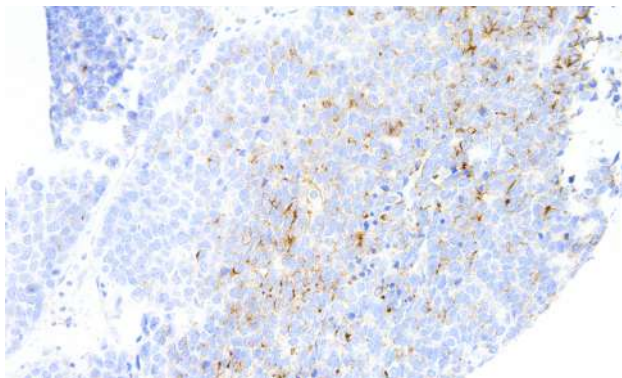
Application Information

Application	Immunohistochemistry, ELISA
Formulation	Liquid
Species Reactivity	Human
Storage Buffer	PBS, pH 7.4 with 0.02% Sodium Azide

Podoplanin

Clone: AHC0218 | **Cat. No.** HY000218 | **Source:** Mouse Monoclonal

SensiStain™ Anti-Podoplanin Antibody sensitively detects for the presence or absence of podoplanin. Podoplanin is a transmembrane mucoprotein specifically expressed in the endothelium of lymphatic capillaries, but is not present in blood vasculature, and is co-localized with VEGFR3/FLT4 in normal skin and kidney tissues.



Podoplanin SensiStain™ on Human Liver Tissue

Specifications

Immunogen	Recombinant Human Podoplanin
Isotype	IgG2a, kappa
Concentration	100 µg / 100 µl
Uniprot Number	Q86YL7
Purity	Protein A/G Affinity Purified

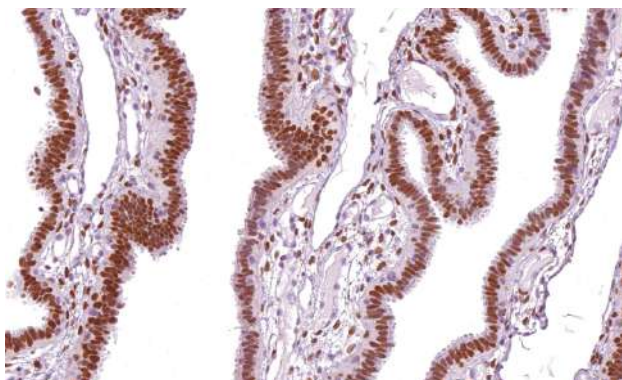
Application Information

Application	Immunohistochemistry
Formulation	Liquid
Species Reactivity	Human
Storage Buffer	PBS, pH 7.4 with 0.02% Sodium Azide

Progesterone Receptor

Clone: AHC0219 | **Cat. No.** HY000219 | **Source:** Mouse Monoclonal

SensiStain™ Anti-Progesterone Receptor (PR) Antibody is developed and designed to detect for the presence of PR (also known as NR3C3). PR is found within the cell, and is activated by the presence of steroid hormone progesterone. Progesterone receptor expression has been linked to breast cancer and may be used as a marker for disease prognosis.



Progesterone Receptor SensiStain™ on Human Fallopian Tube Tissue

Specifications

Immunogen	Recombinant Human Progesterone Receptor
Isotype	IgG1, kappa
Concentration	100 µg / 100 µl
Uniprot Number	P06401
Purity	Protein A/G Affinity Purified

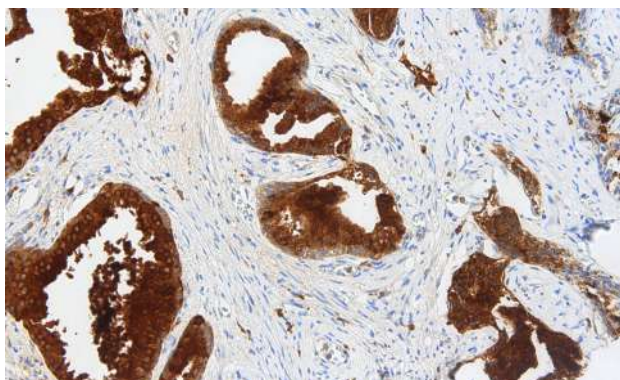
Application Information

Application	Immunohistochemistry, ELISA
Formulation	Liquid
Species Reactivity	Human
Storage Buffer	PBS, pH 7.4 with 0.02% Sodium Azide

PSAP

Clone: AHC0223 | **Cat. No.** HY000223 | **Source:** Mouse Monoclonal

Prostatic Specific Acid Phosphatase (PSAP) or PAP, is a prostatic enzyme found in the glandular epithelium of the prostate. In conditions, such as hyperplastic prostate and prostate carcinoma, PSAP levels are elevated. Overexpression of PSAP has been associated with diseases of the bone, blood, or cancers. SensiStain™ Anti-PSAP Antibody is in ready-to-use format for your research needs.



PSAP SensiStain™ on Human Prostate Tissue

Specifications

Immunogen	Recombinant Human PSAP
Isotype	IgG1
Concentration	100 µg / 100 µl
Uniprot Number	P15309
Purity	Protein A/G Affinity Purified

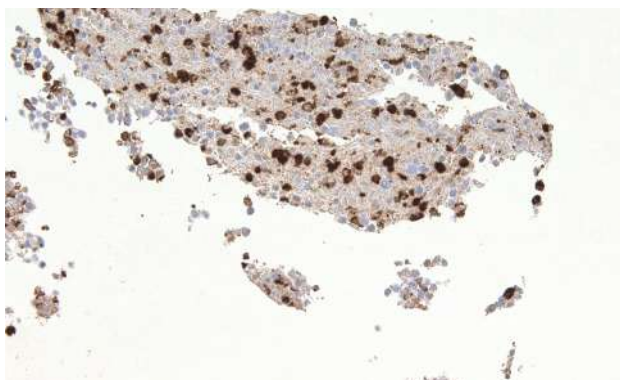
Application Information

Application	Immunohistochemistry, ELISA
Formulation	Liquid
Species Reactivity	Human
Storage Buffer	PBS, pH 7.4 with 0.02% Sodium Azide

ROS1

Clone: ACH0277 | **Cat. No.** HY000277 | **Source:** Mouse Monoclonal

SensiStain™ Anti-ROS1 Antibody is designed to detect for the presence of ROS1 or proto-oncogene encoding a type I integral membrane protein. It is a receptor tyrosine kinase, which has structural similarity to ALK. The role of ROS1 has not been fully explored, and there is not much information on the function of the protein in normal development, but is an upcoming therapeutic target for research.



ROS1 SensiStain™ on ROS1 Positive ICC Pellet

Specifications

Immunogen	Recombinant Human ROS1
Isotype	IgG2a
Concentration	100 µg / 100 µl
Uniprot Number	P08922
Purity	Protein A/G Affinity Purified

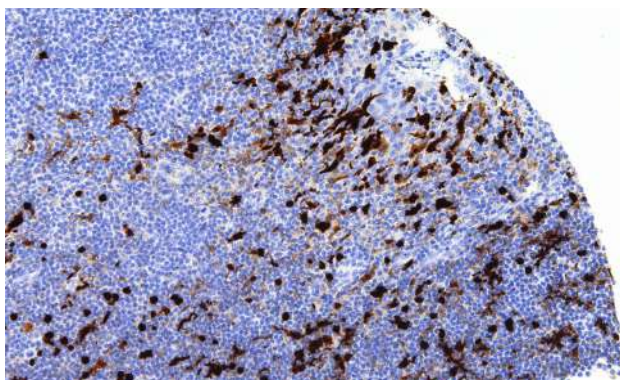
Application Information

Application	Immunohistochemistry, ELISA
Formulation	Liquid
Species Reactivity	Human
Storage Buffer	PBS, pH 7.4 with 0.02% Sodium Azide

S-100

Clone: AHC0226 | **Cat. No.** HY000226 | **Source:** Mouse Monoclonal

S-100 or S100 is found in high levels in astrocytes and a number of other tissues, such as Schwann cells, melanocytes, glial cells, histiocytes, lipocytes, skeletal and cardiac muscle, chondrocytes, adipocytes, myoepithelial cells, macrophages, Langerhans cells, dendritic cells, and keratinocytes. SensiStain™ Anti-S-100 Antibody is a useful marker for Schwann cell-derived tumors.



S-100 SensiStain™ on Human Tonsil Tissue

Specifications

Immunogen	Recombinant Human S-100
Isotype	IgG2a, kappa
Concentration	100 µg / 100 µl
Uniprot Number	P23297
Purity	Protein A/G Affinity Purified

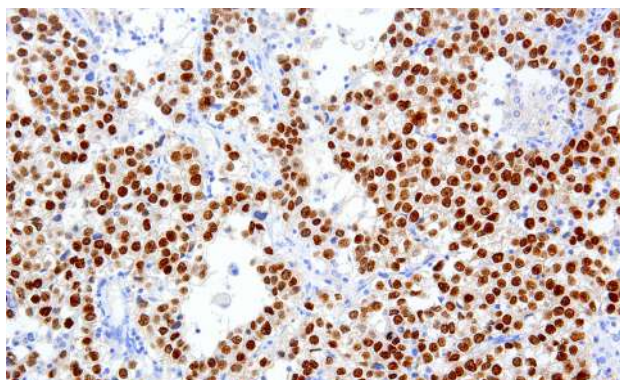
Application Information

Application	Immunohistochemistry
Formulation	Liquid
Species Reactivity	Human
Storage Buffer	PBS, pH 7.4 with 0.02% Sodium Azide

SALL4

Clone: AHC0228 | **Cat. No.** HY000228 | **Source:** Mouse Monoclonal

SensiStain™ Anti-SALL4 Antibody may be used as a marker to detect acute myeloid leukemia and B-cell acute lymphocytic leukemia. It is designed and developed to sensitively stain for the presence or absence of SALL4 expression, which is a zinc finger transcription factor generally found in germ cells and human blood progenitor cells. Its functional involvement is in modulating OCT4 to maintain embryonic stem cell pluripotency.



SALL4 SensiStain™ on Human Ovary Tissue

Specifications

Immunogen	Recombinant Human SALL4
Isotype	IgG1
Concentration	100 µg / 100 µl
Uniprot Number	Q9UJQ4
Purity	Protein A/G Affinity Purified

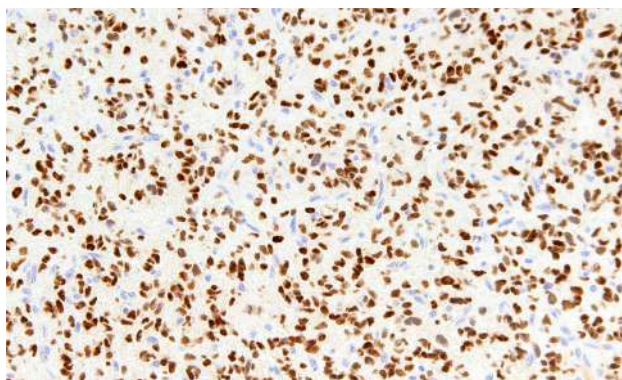
Application Information

Application	Immunohistochemistry, ELISA
Formulation	Liquid
Species Reactivity	Human
Storage Buffer	PBS, pH 7.4 with 0.02% Sodium Azide

SOX-2

Clone: AHC0234 | **Cat. No.** HY000234 | **Source:** Mouse Monoclonal

SRY (sex determining region Y)-Box 2 or SOX-2, is a transcription factor that regulates the pluripotency of undifferentiated embryonic stem cells, and regulates gene expression in the stomach. It is a valuable tool to study stage I lung adenocarcinomas as it has been indicated to be a predictor of poor prognosis. It may be used to detect squamous cell carcinomas of the lung and gastrointestinal tract, and embryonal carcinoma.



SOX-2 SensiStain™ on Human Glioma Tissue

Specifications

Immunogen	Recombinant Human SOX-2
Isotype	IgG1
Concentration	100 µg / 100 µl
Uniprot Number	P48431
Purity	Protein A/G Affinity Purified

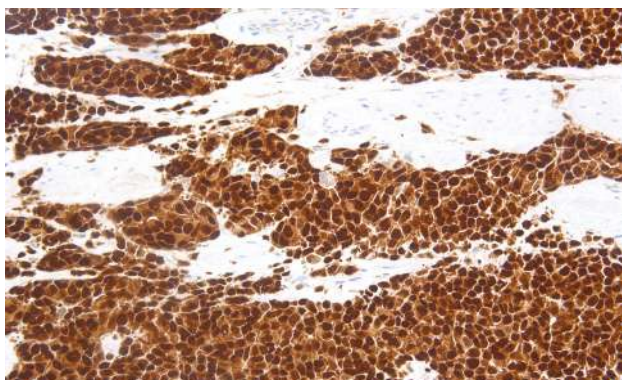
Application Information

Application	Immunohistochemistry, ELISA
Formulation	Liquid
Species Reactivity	Human
Storage Buffer	PBS, pH 7.4 with 0.02% Sodium Azide

SOX-10

Clone: AHC0235 | **Cat. No.** HY000235 | **Source:** Mouse Monoclonal

SOX-10 is a nuclear transcription factor that is involved in the regulation of embryonic development and differentiation of cells of melanocytic lineage. Neurofibromas and schwannomas are found to express SOX-10. Anti-Sox-10 is targeted towards conventional, spindled and desmoplastic melanoma, and has been found to detect metastatic melanoma and nodal capsular nevus in sentinel lymph nodes. SensiStain™ Anti-SOX-10 Antibody is in ready-to-use format.



SOX-10 SensiStain™ on Human Rectum Tissue

Specifications

Immunogen	Human SOX-10
Isotype	IgG2b, kappa
Concentration	100µg / 100µl
Uniprot Number	N/A
Purity	Protein A/G Affinity Purified

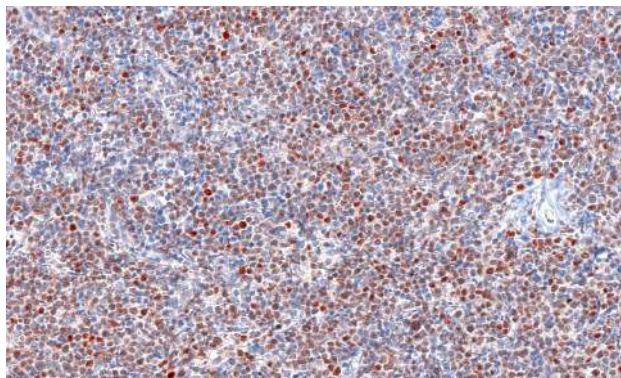
Application Information

Application	Immunohistochemistry, Western Blot, ELISA
Formulation	Liquid
Species Reactivity	Human
Storage Buffer	PBS, pH 7.4 with 0.02% Sodium Azide

SOX-11

Clone: AHC0236 | **Cat. No.** HY000236 | **Source:** Mouse Monoclonal

SRY (Sex Determining Region Y)-Box 11 or SOX-11, is the nuclear transcription factor that acts in regulation of embryonic development and in cell differentiation. It is a valuable tool to detect for SOX-11 expression in tissues relating to the development of the human central nervous system, medulloblastoma, and glioma. Studies have shown that SOX-11 can also be used as a marker in the detection of Cyclin D1-positive and negative mantle cell lymphoma, Burkitt lymphoma, and lymphoblastic lymphoma as well.

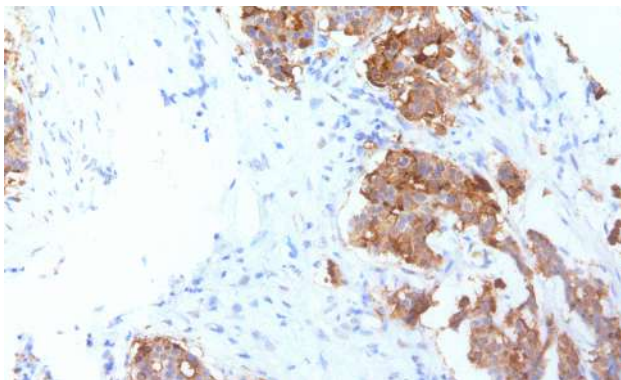


SOX-11 SensiStain™ on Human Lymphoma Tissue

SPNS2

Clone: AHC0264 | **Cat. No.** HY000264 | **Source:** Mouse Monoclonal

SPNS2 or sphingolipid transporter 2 is a protein that transports sphingosine 1-phosphate, a secreted lipid, which is involved and important in cardiovascular, neural, immunological, and immunological development. SensiStain™ Anti-SPNS2 Antibody is designed to specifically detect for the presence of SPNS2, in which studies have indicated that expression may be involved in apoptosis, thus affecting cell migrations in cancer such as non-small-cell lung cancer (NSCLC).



SPNS2 SensiStain™ on Human Esophagus Tissue

Specifications

Immunogen	Recombinant Human SOX-11
Isotype	IgG1
Concentration	100 µg / 100 µl
Uniprot Number	P35716
Purity	Protein A/G Affinity Purified

Application Information

Application	Immunohistochemistry, Western Blot, ELISA
Formulation	Liquid
Species Reactivity	Human
Storage Buffer	PBS, pH 7.4 with 0.02% Sodium Azide

Specifications

Immunogen	Recombinant Human SPNS2
Isotype	IgG1
Concentration	100 µg / 100 µl
Uniprot Number	Q8IVW8
Purity	Protein A/G Affinity Purified

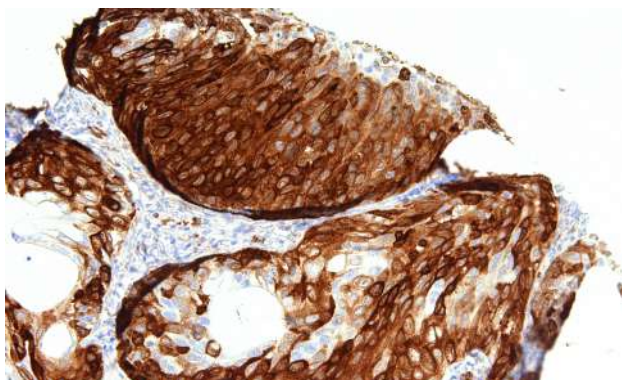
Application Information

Application	Immunohistochemistry, ELISA
Formulation	Liquid
Species Reactivity	Human
Storage Buffer	PBS, pH 7.4 with 0.02% Sodium Azide

Stathmin

Clone: AHC0239 | **Cat. No.** HY000239 | **Source:** Mouse Monoclonal

SensiStain™ Anti-Stathmin Antibody is developed to detect for the presence of stathmin, which is present in all tissues, but is mostly pronounced in constantly proliferating cell types. Stathmin regulates microtubule dynamics in the cell cycle, and the increased presence of the protein has been linked to certain types of cervical cancer.



Stathmin SensiStain™ on Human Cervix Tissue

Specifications

Immunogen	Recombinant Human Stathmin
Isotype	IgM
Quantity	0.5 ml
Uniprot Number	P16949
Purity	Cell Culture Neat Supernatant

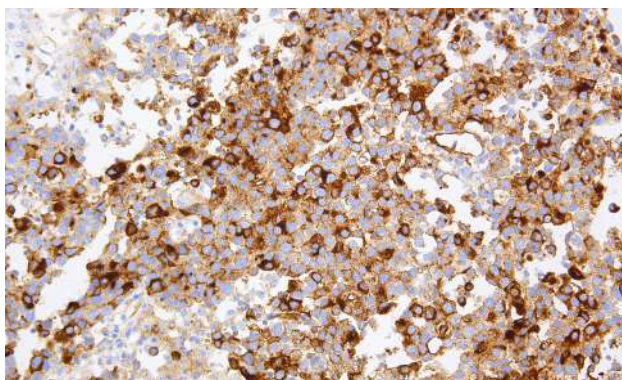
Application Information

Application	Immunohistochemistry, ELISA
Formulation	Liquid
Species Reactivity	Human
Storage Buffer	Neat Supernatant with 0.02% Sodium Azide

TAG-72

Clone: AHC0242 | **Cat. No.** HY000242 | **Source:** Mouse Monoclonal

SensiStain™ Anti-TAG-72 Antibody is in ready-to-use format. Tumor-Associated Glycoprotein 72 (TAG-72) is a glycoprotein that found on the surface of many cancer cells, such as ovary, breast, colon, lung and pancreas. Anti-TAG-72 can be used for detecting human adenocarcinomas and non-neoplastic tissues. In addition, Anti-TAG-72 is also useful for distinguishing between mesothelioma and adenocarcinomas.



TAG-72 SensiStain™ on Human Ovary Tissue

Specifications

Immunogen	Recombinant Human TAG-72
Isotype	IgG1, kappa
Concentration	100 µg / 100 µl
Uniprot Number	Q9XVS1
Purity	Protein A/G Affinity Purified

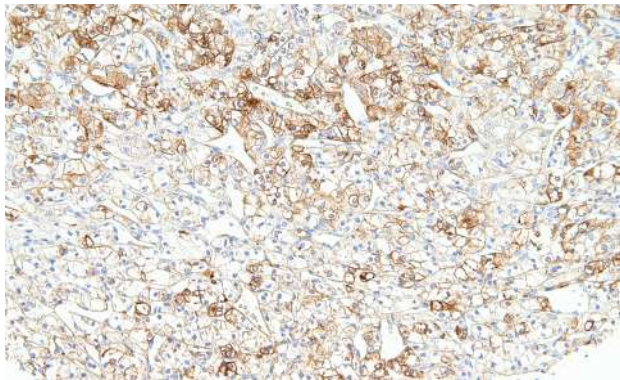
Application Information

Application	Immunohistochemistry, Western Blot
Formulation	Liquid
Species Reactivity	Human
Storage Buffer	PBS, pH 7.4 with 0.02% Sodium Azide

Tau

Clone: AHC0263 | **Cat. No.** HY000263 | **Source:** Mouse Monoclonal

SensiStain™ Anti-Tau Antibody is designed for detection of Tau/MAPT protein expressing tissue or lysates. Tau proteins are abundant in the neurons of the central nervous system (CNS), which play a role as stabilizing microtubules. Studies have shown tau plays a pathological aggregation role in Alzheimer's disease, most commonly via tau tangles.



Tau SensiStain™ on Human Kidney Tissue

Specifications

Immunogen	Human Recombinant Tau (Longest Brain Isoform 441 aa)
Isotype	IgG1
Concentration	100 µg / 100 µl
Uniprot Number	P10636
Purity	Protein A/G Affinity Purified

Application Information

Application	Immunohistochemistry
Formulation	Liquid
Species Reactivity	Human
Storage Buffer	PBS, pH 7.4 with 0.02% Sodium Azide

TFE3

Clone: AHC0245 | **Cat. No.** HY000245 | **Source:** Mouse Monoclonal

Transcription Factor E3 or TFE3 is a transcription factor that is involved in TGF-β signaling, playing important roles for cell growth, proliferation and macrophage differentiation. This antibody is most sensitive and specific for Xp11 translocation renal cell carcinomas; it is also a useful tool for recognizing alveolar soft part sarcoma (ASPS). SensiStain™ Anti-TFE3 Antibody is in a ready-to-use format.



TFE3 SensiStain™ on Human Thyroid Tissue

Specifications

Immunogen	Recombinant Human TFE3
Isotype	IgG1
Concentration	100 µg / 100 µl
Uniprot Number	P19532
Purity	Protein A/G Affinity Purified

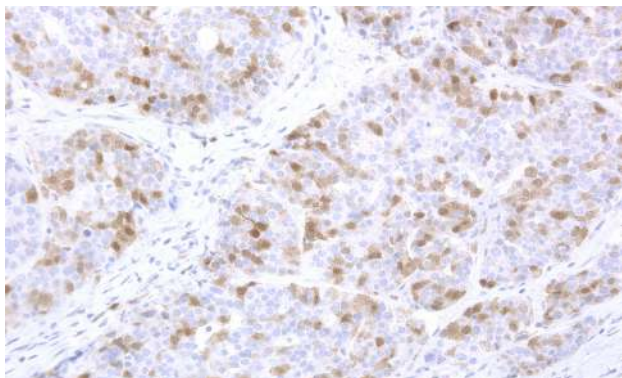
Application Information

Application	Immunohistochemistry, Western Blot
Formulation	Liquid
Species Reactivity	Human
Storage Buffer	PBS, pH 7.4 with 0.02% Sodium Azide

Thymidylate Synthase

Clone: AHC0267 | **Cat. No.** HY000267 | **Source:** Mouse Monoclonal

SensiStain™ Anti-Thymidylate Synthase Antibody detects for the thymidylate synthase enzyme which functions to catalyze the conversion of deoxyuridine monophosphate (dUMP) to 2'-deoxythymidine-5'-monophosphate (dTMP), an essential precursor in DNA biosynthesis processes. It is a key enzyme which has been a target for chemotherapy.



Thymidylate Synthase SensiStain™ on Human Ovary Tissue

Specifications

Immunogen	Human Recombinant Thymidylate Synthase
Isotype	IgG1
Concentration	100 µg / 100 µl
Uniprot Number	P04818
Purity	Protein A/G Affinity Purified

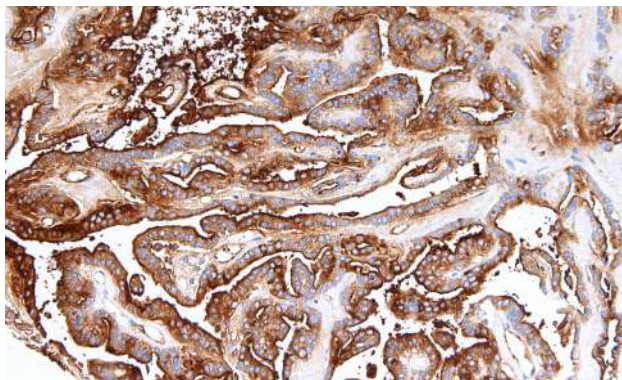
Application Information

Application	Immunohistochemistry
Formulation	Liquid
Species Reactivity	Human
Storage Buffer	PBS, pH 7.4 with 0.02% Sodium Azide

Thyroglobulin

Clone: AHC0247 | **Cat. No.** HY000247 | **Source:** Mouse Monoclonal

SensiStain™ Anti-Thyroglobulin Antibody is in ready-to-use format. Thyroglobulin serves as a precursor to thyroid hormones T4 and T3 and can be found in thyroid follicular cells. Thyroglobulin expression is prevalent in thyroid follicular carcinomas for which this antibody is useful in recognizing. In addition, Anti-Thyroglobulin antibody may be used in conjunction with Anti-Calcitonin to identify medullary thyroid carcinomas and primary, as well as lung neoplasms if used with Anti-TTF1.



Thyroglobulin SensiStain™ on Human Thyroid Tissue

Specifications

Immunogen	Recombinant Human Thyroglobulin
Isotype	IgG1
Concentration	100 µg / 100 µl
Uniprot Number	P01266
Purity	Protein A/G Affinity Purified

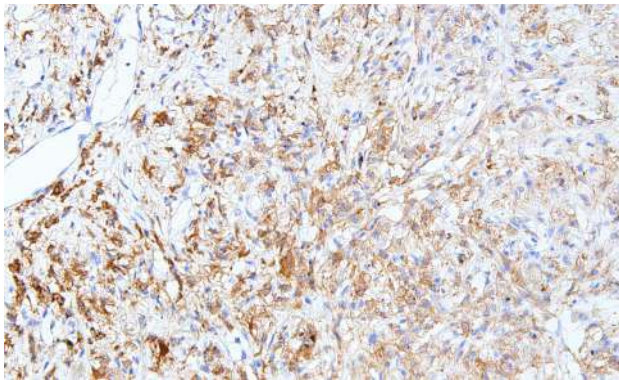
Application Information

Application	Immunohistochemistry, Western Blot
Formulation	Liquid
Species Reactivity	Human
Storage Buffer	PBS, pH 7.4 with 0.02% Sodium Azide

TIM3

Clone: AHC0249 | **Cat. No.** HY000249 | **Source:** Mouse Monoclonal

T-cell Immunoglobulin and Mucin-Domain-Containing Molecule-3 (TIM3) is expressed on T-helper type 1 lymphocytes, and other immune cells, including dendritic cells and natural killer cells. SensiStain™ Anti-TIM3 Antibody is developed for the specific staining of TIM3 in tissue samples. TIM3 over-expression has been indicated in CD4 tumor-infiltrating lymphocytes, which also includes those with non-small-cell lung cancer associated with poor prognoses.

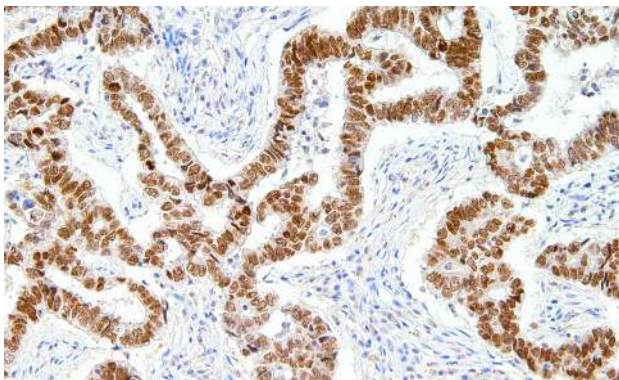


TIM3 SensiStain™ on Human Lung Tissue

TTF-1

Clone: AHC0254 | **Cat. No.** HY000254 | **Source:** Mouse Monoclonal

Thyroid Transcription Factor 1 (TTF-1) is present in diencephalon, lung, and thyroid tissues. SensiStain™ Anti-TTF-1 Antibody may be used for the detection of TTF-1's presence in tissues and distinguishing lung adenocarcinoma from germ cell tumors, malignant mesothelioma, and metastatic carcinomas from organs other than the thyroid.



TTF-1 SensiStain™ on Human Lung Tissue

Specifications

Immunogen	Recombinant Human TIM3
Isotype	IgG1
Concentration	100 µg / 100 µl
Uniprot Number	P04053
Purity	Protein A/G Affinity Purified

Application Information

Application	Immunohistochemistry, ELISA
Formulation	Liquid
Species Reactivity	Human
Storage Buffer	PBS, pH 7.4 with 0.02% Sodium Azide

Specifications

Immunogen	Recombinant Human TTF-1
Isotype	IgG2b, kappa
Concentration	100 µg / 100 µl
Uniprot Number	Q15361
Purity	Protein A/G Affinity Purified

Application Information

Application	Immunohistochemistry, ELISA
Formulation	Liquid
Species Reactivity	Human
Storage Buffer	PBS, pH 7.4 with 0.02% Sodium Azide



FFPE Tissue Slides

We supply a wide range of normal and diseased FFPE Tissue Slides. Please inquire with our team at technical@abmgood.com for the most updated information on our current inventory.

Tissue Slides



Features

- ✓ Wide selection of normal and diseased human and mouse tissues
- ✓ All tissues fixed in 10% formalin and embedded in IHC-grade paraffin
- ✓ 4 μm thick slices mounted on glass slides ready for H&E or IHC Staining

abm's paraffin tissue slides come in a wide selection of tissue and disease types for the identification of cellular target(s). Pathology tissue slides are available for normal

tissues from various organs such as bladder, brain, and liver, or diseased tissues such as lymphoma, with tissue marker characteristics confirmed by H&E staining.

Tissue Type	State	Description	Species	Unit	Cat. No.
Bladder	Normal	Bladder	Human	6 Slides/Pack	HS0040
Brain	Normal	Brain	Human	6 Slides/Pack	HS0021
Brain	Normal	Brain	Mouse	6 Slides/Pack	HS0057
Brain	Cancer	Meningioma	Human	6 Slides/Pack	HS0036
Digestive	Normal	Colon	Human	6 Slides/Pack	HS0024
Digestive	Normal	Esophagus	Human	6 Slides/Pack	HS0039
Digestive	Normal	Intestine	Human	6 Slides/Pack	HS0027
Digestive	Normal	Rectum	Human	6 Slides/Pack	HS0028
Digestive	Normal	Stomach	Human	6 Slides/Pack	HS0029
Digestive	Cancer	Colon Adenocarcinoma	Human	6 Slides/Pack	HS0022
Digestive	Cancer	Colon Cancer	Human	6 Slides/Pack	HS0023
Digestive	Cancer	Esophageal Cancer	Human	6 Slides/Pack	HS0037
Digestive	Cancer	Esophageal Squamous Cell Carcinoma	Human	6 Slides/Pack	HS0038
Digestive	Cancer	Intestine Cancer	Human	6 Slides/Pack	HS0006
Digestive	Cancer	Intestine Cancer	Human	6 Slides/Pack	HS0007
Digestive	Cancer	Intestine Cancer	Human	6 Slides/Pack	HS0008
Digestive	Cancer	Intestine Cancer	Human	6 Slides/Pack	HS0009
Digestive	Cancer	Intestine Cancer	Human	6 Slides/Pack	HS0010
Digestive	Cancer	Rectal Adenocarcinoma	Human	6 Slides/Pack	HS0025
Digestive	Cancer	Stomach Adenocarcinoma	Human	6 Slides/Pack	HS0026
Digestive	Cancer	Stomach Cancer	Human	6 Slides/Pack	HS0016

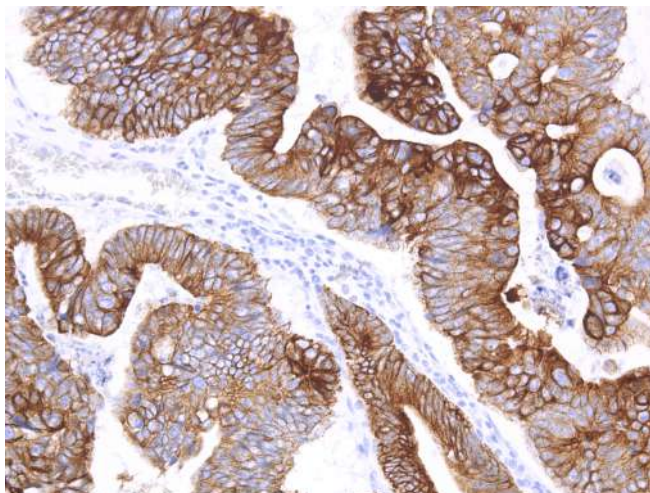
Tissue Type	State	Description	Species	Unit	Cat. No.
Digestive	Cancer	Stomach Cancer	Human	6 Slides/Pack	HS0017
Digestive	Cancer	Stomach Cancer	Human	6 Slides/Pack	HS0018
Digestive	Cancer	Stomach Cancer	Human	6 Slides/Pack	HS0019
Digestive	Cancer	Stomach Cancer	Human	6 Slides/Pack	HS0020
Endocrine	Normal	Thyroid	Human	6 Slides/Pack	HS0053
Endocrine	Cancer	Thyroid Papillary Carcinoma	Human	6 Slides/Pack	HS0052
Gallbladder	Normal	Gallbladder	Human	6 Slides/Pack	HS0031
Gallbladder	Cancer	Gallbladder Cancer	Human	6 Slides/Pack	HS0030
Kidney	Normal	Kidney	Human	6 Slides/Pack	HS0055
Kidney	Cancer	Kidney Clear Cell Carcinoma	Human	6 Slides/Pack	HS0054
Liver	Normal	Liver	Human	6 Slides/Pack	HS0032
Lung	Normal	Lung	Human	6 Slides/Pack	HS0034
Lung	Cancer	Lung Adenocarcinoma	Human	6 Slides/Pack	HS0033
Lymphoma	Cancer	High Grade Lymphoma	Human	6 Slides/Pack	HS0035
Reproductive	Normal	Breast	Human	6 Slides/Pack	HS0048
Reproductive	Normal	Cervix	Human	6 Slides/Pack	HS0049
Reproductive	Normal	Ovary	Human	6 Slides/Pack	HS0050
Reproductive	Cancer	Breast Cancer	Human	6 Slides/Pack	HS0001
Reproductive	Cancer	Breast Cancer	Human	6 Slides/Pack	HS0002
Reproductive	Cancer	Breast Cancer	Human	6 Slides/Pack	HS0003
Reproductive	Cancer	Breast Cancer	Human	6 Slides/Pack	HS0004
Reproductive	Cancer	Breast Cancer	Human	6 Slides/Pack	HS0005
Reproductive	Cancer	Breast Ductal Carcinoma	Human	6 Slides/Pack	HS0041
Reproductive	Cancer	Breast Invasive Carcinoma	Human	6 Slides/Pack	HS0042
Reproductive	Cancer	Cervical Squamous Cell Carcinoma	Human	6 Slides/Pack	HS0043
Reproductive	Cancer	Endometrioid Adenocarcinoma	Human	6 Slides/Pack	HS0044
Reproductive	Cancer	Endometrioid Cancer	Human	6 Slides/Pack	HS0045
Reproductive	Cancer	Ovarian Cancer	Human	6 Slides/Pack	HS0046
Reproductive	Cancer	Ovarian High Grade Serous Cancer	Human	6 Slides/Pack	HS0047
Spleen	Normal	Spleen	Human	6 Slides/Pack	HS0051
Urinary	Normal	Ureter	Human	6 Slides/Pack	HS0056
Urinary	Cancer	Kidney Cancer	Human	6 Slides/Pack	HS0011
Urinary	Cancer	Kidney Cancer	Human	6 Slides/Pack	HS0012
Urinary	Cancer	Kidney Cancer	Human	6 Slides/Pack	HS0013
Urinary	Cancer	Kidney Cancer	Human	6 Slides/Pack	HS0014
Urinary	Cancer	Kidney Cancer	Human	6 Slides/Pack	HS0015



Histology Services

Immunohistological staining, custom tissue microarray (TMA) construction, antibody optimization, and preparation of your tissue specimens - we can do it all. **abm** offers a range of highly customizable histology services to meet any budget and timeline. Let us help you with your projects today.

IHC Staining and Optimization Services



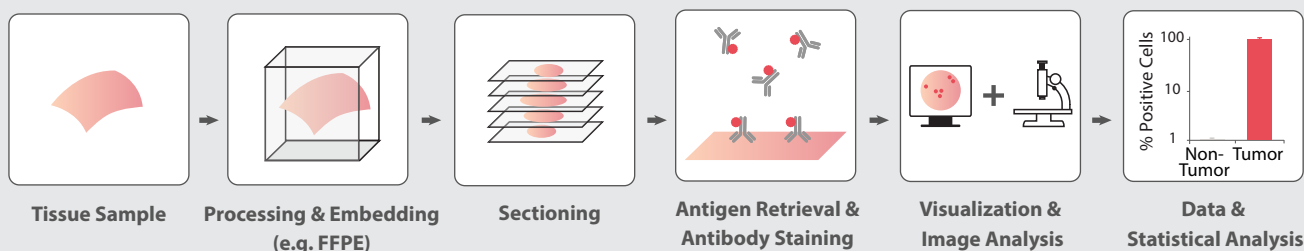
Features

- ✓ Stain using an IHC antibody from our 200+ collection or submit your own
- ✓ Staining performed on Leica BOND-MAX Autostainer for consistent results
- ✓ 1-2 weeks turnaround time
- ✓ Highly sensitive staining with minimum background

Immunohistochemistry (IHC) is currently used in both research and clinical settings for the diagnosis of abnormal cells and the distribution and localization of certain proteins-of-interest in the cell. **abm** offers IHC staining

services using a wide range of validated antibodies - over 200 high specificity antibodies for a variety of pathological markers.

Service Workflow



Specimens accepted:

- ✓ Unstained slide
- ✓ Formalin-fixed wet tissues
- ✓ Fixed cell pellet
- ✓ FFPE tissue block



Testimonial

"We are happy about the CD4 and CD8 IHC staining your lab did. The quality of the IHC staining is very good."

Fugang Zhu

Idera Pharmaceuticals Inc, Custom IHC Staining Service (HC002)

IHC Staining and Optimization Services

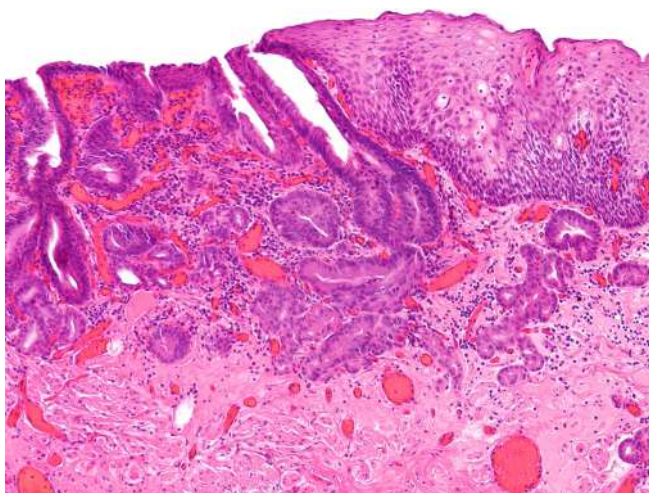
Service	Description	Customers Provide	Deliverables	Lead Time	Cat. No.
Basic Service <i>Primary antibody provided by customer.</i>	Immunohistochemistry staining of previously sectioned FFPE Slides.	<ul style="list-style-type: none"> A minimum of 20 µg of primary antibody raised in either mouse or rabbit. Information regarding the antigen retrieval method and optimal antibody working concentration for the marker of interest. One positive control slide for the marker of interest. 	Cover-slipped stained IHC slide.	1-2 weeks (inquire for rush orders)	HC001
Complete Service <i>Primary antibody provided by abm.</i>	Immunohistochemistry staining of previously sectioned FFPE Slides with an IHC antibody from abm 's repertoire of common antibodies. Please contact us for a list of validated IHC antibodies for this service.	<ul style="list-style-type: none"> Test tissue blocks or slides for the marker of interest. 	Cover-slipped stained IHC slide.	1-2 weeks (inquire for rush orders)	HC002
Dual Staining Service	Immunohistochemistry staining of previously sectioned FFPE Slides. Dual staining service offers simultaneous staining of two markers of interest. This service is restricted to the simultaneous detection of one (1) mouse antibody (stained brown) and one (1) rabbit antibody (stained red).	<ul style="list-style-type: none"> A minimum of 20 µg of primary antibody. Information regarding optimal antibody dilutions for both antibodies. One positive control slide for each marker of interest. 	Cover-slipped stained IHC slide.	1-2 weeks (inquire for rush orders)	HC003
IHC Optimization Service	Optimization of a specific antibody to obtain the best staining results with minimal background. To obtain best results, 3 methods of pretreatment, and 4 different dilutions will be tested for each case.	<ul style="list-style-type: none"> A minimum of 100 µg of the primary antibody. One positive control tissue block for the marker of interest. 	Images of all 12 slides will be given to the customer. For delivery of actual slides, please inquire.	2-3 weeks	HC015

Add-On Services Please refer to pg. 58 for a full list of our add-on services such as tissue processing, embedding and sectioning.



Browse our full selection of Histology Services at www.abmGood.com

H&E and Special Staining Services



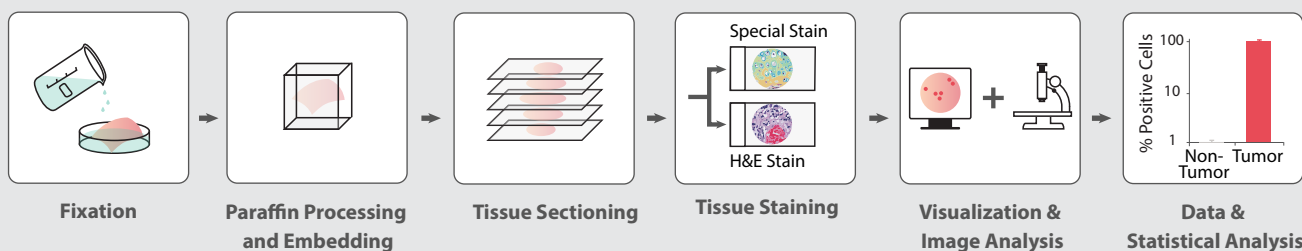
Features

- ✓ Select from 8 special stain options
- ✓ 1-2 weeks turnaround time
- ✓ Highly sensitive staining with minimum background
- ✓ Specimen types accepted: unstained slides, formalin-fixed wet tissues, fixed cell pellets or FFPE tissue blocks

Hematoxylin & Eosin staining (H&E) is widely used for routine examination of tissue structure. This staining technique is useful for medical diagnosis and quality control of processed tissue specimens in the histology lab.

Special stains, such as Acid Fast Bacilli (AFB), Alcian Blue, Periodic Acid Schiff (PAS), Gram, Congo Red, and Toluidine Blue, are also available to detect, visualize and evaluate particular tissue structures, elements or substances.

Service Workflow



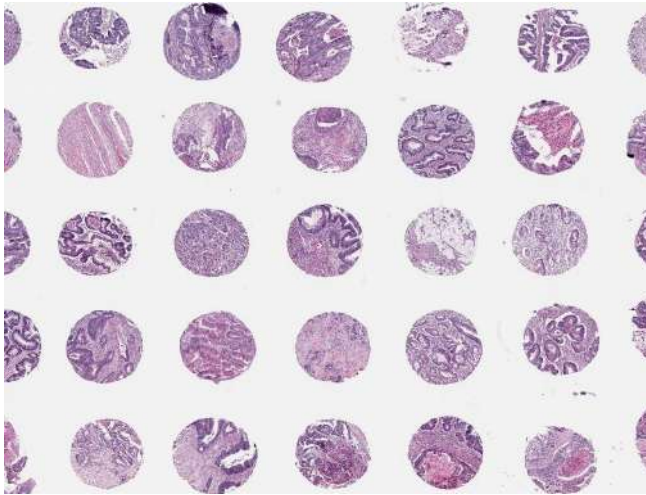
Special stains available:

- ✓ Acid Fast Bacilli (AFB)
- ✓ Congo Red
- ✓ Nissl
- ✓ Periodic Acid Schiff (PAS)
- ✓ Alcian Blue
- ✓ Gram
- ✓ Oil Red O
- ✓ Toluidine Blue

Service	Description	Deliverables	Lead Time	Cat. No.
H&E Staining	Staining of sectioned paraffin embedded tissue or cell pellet using Hematoxylin and Eosin.	Cover-slipped H&E stained slide.	1-2 weeks	HC013
Special Staining	Staining of sectioned paraffin embedded tissue or cell pellet using special dyes.	Cover-slipped H&E stained slide.	1-2 weeks	HC014

Add-On Services Please refer to pg. 58 for a full list of our add-on services such as tissue processing, embedding and sectioning.

Custom Tissue Microarray Construction



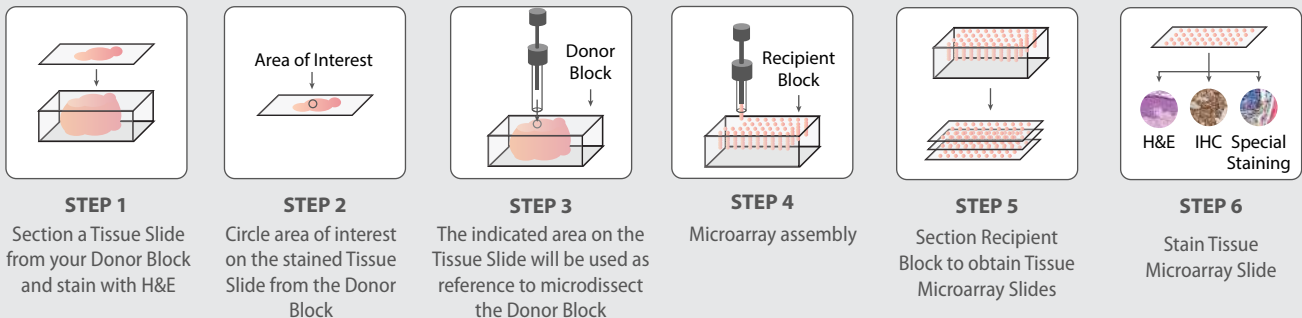
Features

- ✓ 4 core sizes available
- ✓ Simply submit your single tissue block(s) or use tissue block(s) from **abm's** collection
- ✓ Detailed TMA construction report provided

Tissue Microarray (TMA) is an innovative tool that allows the simultaneous staining and visualization of multiple samples on the same slide, allowing for high throughput

procedures. **abm** offers custom construction of Tissue Microarrays with a variety of core sizes at fast turn around times.

Service Workflow



Core sizes available:

Core size	2.5 mm	2.0 mm	1.5 mm	1.0 mm
No. of rows	5	7	10	10
No. of columns	8	10	15	17
Total cores	40	70	150	170
Visualization	<p>● 2.5 mm Core Size</p>	<p>● 2.0 mm Core Size</p>	<p>● 1.5 mm Core Size</p>	<p>● 1.0 mm Core Size</p>

Custom Tissue Microarray Construction Services

Service	Description	Customers Provide	Deliverables	Lead Time	Cat. No.
Basic Service <i>Single tissue block(s) provided by customer.</i>	Construction of Tissue Microarray block from single tissue blocks provided by customer.	<ul style="list-style-type: none"> All donor blocks required to construct the Tissue Microarray. Please contact us if you are not able to provide all blocks required. Circle the area of interest on the H&E stained slide generated from each donor block and send us the slide(s) and/or image(s) of the whole slide(s). 	Tissue Microarray block and detailed TMA Construction Report with information provided for each core.	Project dependent	HC020
Complete Service <i>Single tissue block(s) provided by abm.</i>	Construction of Tissue Microarray block with single tissue blocks provided by abm . To find out which blocks are available, contact us with information regarding the tissue types/diseases you wish to include.	<ul style="list-style-type: none"> Information on tissue types/diseases that you wish to include in the tissue microarray or the cores that will be selected from abm's FFPE block inventory. 	Tissue Microarray block and detailed TMA Construction Report with information provided for each core.	Project dependent	HC021

Add-On Services Please refer to pg. 58 for a full list of our add-on services such as tissue processing, embedding and sectioning.



Browse our full selection of Histology Services at www.abmGood.com

Add-on Services

Have the tissue, but can't embed it or cut it? Send us the tissue sample/block, and we'll embed and/or cut it for you! **abm's** Add-On Services can be added to your histology custom service project or ordered as a stand alone service.

Service	Description	Deliverables	Lead Time	Cat. No.
Tissue Processing	Processing of Formalin-Fixed wet tissue suitable for paraffin embedding.	Processed wet tissue suitable for paraffin embedding.	Project dependent	HC004
Paraffin Embedding	Embedding processed tissue into FFPE block suitable for sectioning and subsequent staining.	FFPE tissue block.	Project dependent	HC005
Cell Pellet Processing and Embedding	Processing of wet cell pellet into FFPE block suitable for sectioning and subsequent staining.	Paraffin embedded cell pellet block.	Project dependent	HC009
Paraffin Sectioning	Sectioning of FFPE blocks to produce unstained slides. Unstained slides can be used for H&E, IHC or dye based staining. All slides are cut at 4 μ m unless otherwise specified. Please inquire for Tissue Microarray sectioning.	Unstained FFPE tissue section slides.	Project dependent	HC006
Serial Sectioning	Multiple sections cut in sequence by the Microtome from the same tissue block.	Multiple slides cut in sequence by the Microtome from the same specimen.	Project dependent	HC007
Stop Sectioning	Multiple sections from the same tissue block cut at set distances from one another by the Microtome.	Multiple slides within a sample at set distances from one another.	Project dependent	HC008
Digital Scan	Digital scans of stained slides. This service is offered in conjunction with IHC, H&E or special staining services. Scans are offered at the following magnifications:	Digital scan will be digitally provided to the customer.	Project dependent	
	10X			HC016
	20X			HC017
	40X			HC018
Image Analysis	Image analysis of stained slides using professional software.	Analysis results will be sent digitally to the client.	Project dependent	HC011



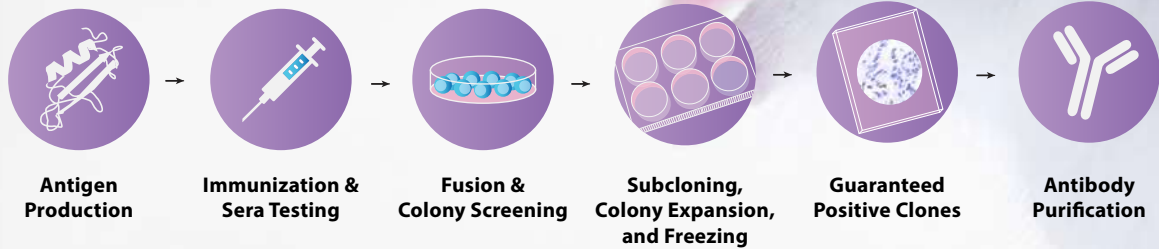
Browse our full selection of Histology Services at www.abmGood.com

Mouse Monoclonal Antibody Production

Streamlined workflow for guaranteed results

With expertise in monoclonal antibodies (mAbs) and recombinant proteins spanning over 15 years, **abm** has streamlined custom mAbs development with superior affinity and specificity.

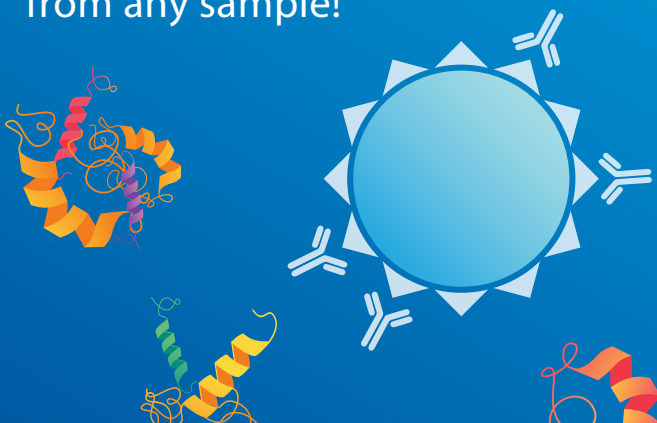
- ✓ Complete start-to-finish service
- ✓ Simply provide your gene accession number, peptide antigen, or ready-to-use antigen
- ✓ *In vitro* or *in vivo* production of antibodies



Service details: <https://info.abmgood.com/mAb-production>

Protein G, A, and L Agarose Resins

Isolate immunoglobulins from any sample!



- ✓ Ready-to-use and easy to scale
- 🕒 Fast and simple procedures for batch or gravity-flow operation
- 💧 Can purify immunoglobulins from serum, ascites fluid, tissue culture supernatant, or other biological fluids
- 🧪 Compatible with a variety of sample formats and buffer additives
- 🔄 Easy-to-recycle resins

To learn more, visit:

<https://info.abmgood.com/antibody-purification-resins>




Applied Biological Materials, Inc.

#1-3671 Viking Way
Richmond, BC, V6V 2J5, Canada

Website: www.abmGood.com

Email: order@abmGood.com

Toll-free: 1-866-757-2414